

9.3. Feedback on facilities:

The Institute has a process of collecting the feedback from students every semester on various facilities like Infrastructure, Laboratory, Maintenance and Library etc., the process of feedback collection is through online and suggestion box, and then forwarded to principal office after analysis in order to take the corrective measures.


The analysis process involves the following steps.

- The feedback analysis is done manually
- The feedback committee scrutinizes collected feedbacks.
- The feedbacks are quantified where all the parameters mentioned in the feedback form are analyzed.
- The analysis done based on the number of Positive and Negative responses by applying ranges of percentages as shown below.

Response	Range	Rubric
No. of Positive Response	75%-100%	3
	55%-74%	2
	35%-54%	1
	<35%	0

- After the analysis, complaints are forwarded to the principal office in order to take the corrective measures.


The below table shows the Feedback form on Facilities

 **Nawab Shah Alam Khan**
COLLEGE OF ENGINEERING & TECHNOLOGY
Approved by AICTE | Permitted by Govt. of Telangana | Affiliated to JNTUH
EAMCET Code : NAWB | PGECET Code : NAWB1 | POLYCET Code : NAWB

FEEDBACK COLLECTION FORM ON FACILITIES

Student Regd Number: 17RTA1250 Branch: IT Date: 28/1/19

Mode	PARAMETER	Need Improvement	Good	Satisfactory	Excellent
Feedback Collection Form on facilities	LIBRARY	Are the required number of titles in your subject available in the library		✓	
		Do you have the facility of Digital Library		✓	
	INTERNET	Are you able to access internet center as and when required	✓		
		Are you making use of educational online resources	✓		
		Are there enough number of nodes available in the internet center	✓		
		Are the net center staff co-Operative and helpful		✓	
		Do you have free campus/departmental WI-FI	✓		
	LAB	Availability of Equipment		✓	
		Working condition of Equipment		✓	
		Staff support in lab		✓	
	CLASS ROOM	Fire safety		✓	
		Size of class room		✓	
		Lighting and ventilation		✓	
	SPORTS FACILITY	Projector		✓	
		Smart class with smart board	✓		
		Availability of variety of Sports		✓	
		Availability of Sports material (ball, bat etc)		✓	
	CANTEEN	Availability of Indoor Games		✓	
		Conduction of tournaments		✓	
		Food price		✓	
		Hygienic food		✓	
	INFRASTRUCTURE	Clean place		✓	
		Quantity services		✓	
		Water plant		✓	
		Parking		✓	
	AMINITIES	Toilets		✓	
		Green Campus pedestrian friendly		✓	
		CCTV Surveillance		✓	✓
		Security guards		✓	
		Waste pit	✓		
		Generator		✓	





Nawab Shah Alam Khan

COLLEGE OF ENGINEERING & TECHNOLOGY

Approved by AICTE | Permitted by Govt. of Telangana | Affiliated to JNTUH

EAMCET Code: NAWB | PGECET Code : NAWB1 | POLYCET Code : NAWB

Date: 26/03/2019

CIRCULAR

All Head of Departments are requested to submit the respective **Students Feedback on Facilities** on or before **12/04/2019** to facilitate the management's annual maintenance activities.


PRINCIPAL

Copy to:-

HOD CSE:

HOD IT:

HOD MECH:

HOD CIVIL:

HOD ECE:

HOD EEE:



Nawab Shah Alam Khan

COLLEGE OF ENGINEERING & TECHNOLOGY

Approved by AICTE | Permitted by Govt. of Telangana | Affiliated to JNTUH

EAMCET Code: NAWB | PGECET Code : NAWB1 | POLYCET Code : NAWB

Date: 26/03/2019

CIRCULAR

All Head of Departments are requested to submit the respective **Students Feedback on Facilities** on or before **12/04/2019** to facilitate the management's annual maintenance activities.



PRINCIPAL

Copy to:-

HOD CSE: 

HOD IT: 

HOD MECH: 

HOD CIVIL: 

HOD ECE: 

HOD EEE: 



Nawab Shah Alam Khan

COLLEGE OF ENGINEERING & TECHNOLOGY

Approved by AICTE | Permitted by Govt. of Telangana | Affiliated to JNTUH

EAMCET Code: NAWB | PGCET Code : NAWB1 | POLYCET Code : NAWB

FEEDBACK COLLECTION FORM ON FACILITIES

Student Regd Number: 17RT/A1250

Branch: IT

Date: 28/11/19

	Mode	PARAMETER	Need Improvement	Good	Satisfactory	Excellent
Feedback Collection Form on facilities	LIBRARY	Are the required number of titles in your subject available in the library			✓	
		Do you have the facility of Digital Library			✓	
	INTERNET	Are you able to access internet center as and when required		✓		
		Are you making use of educational online resources		✓		
		Are there enough number of nodes available in the internet center		✓		
		Are the net center staff co-Operative and helpful			✓	
		Do you have free campus/departmental WI-FI		✓		
	LAB	Availability of Equipment			✓	
		Working condition of Equipment			✓	
		Staff support in lab			✓	
		Fire safety			✓	
	CLASS ROOM	Size of class room			✓	
		Lighting and ventilation			✓	
		Projector			✓	
	SPORTS FACILITY	Smart class with smart board	✓			
		Availability of variety of Sports		✓		
		Availability of Sports material (ball, bat etc)		✓		
		Availability of Indoor Games		✓		
	CANTEEN	Conduction of tournaments			✓	
		Food price			✓	
		Hygienic food			✓	
		Clean place			✓	
		Quantity services			✓	
	INFRASTRUCTURE	Water plant			✓	
		Parking			✓	
		Toilets			✓	
		Green Campus pedestrian friendly				✓
	AMINITIES	CCTV Surveillance			✓	
		Security guards			✓	
		Waste pit		✓		
		Generator			✓	



Nawab Shah Alam Khan

COLLEGE OF ENGINEERING & TECHNOLOGY

Approved by AICTE | Permitted by Govt. of Telangana | Affiliated to JNTUH

EAMCET Code: NAWB | PGCET Code : NAWB1 | POLYCET Code : NAWB

FEEDBACK COLLECTION FORM ON FACILITIES

Student Regd Number: 18ETA1259

Branch: IF

Date: 26/12/19

Mode	PARAMETER	Need Improvement	Good	Satisfactory	Excellent	
LIBRARY	Are the required number of titles in your subject available in the library		✓			
	Do you have the facility of Digital Library		✓			
INTERNET	Are you able to access internet center as and when required		✓			
	Are you making use of educational online resources			✓		
	Are there enough number of nodes available in the internet center			✓		
	Are the net center staff co-Operative and helpful			✓		
	Do you have free campus/departmental WI-FI			✓		
	LAB	Availability of Equipment			✓	
		Working condition of Equipment			✓	
Staff support in lab				✓		
Fire safety			✓	✓		
CLASS ROOM	Size of class room			✓		
	Lighting and ventilation			✓		
	Projector			✓		
	Smart class with smart board	✓				
SPORTS FACILITY	Availability of variety of Sports			✓		
	Availability of Sports material (ball, bat etc)		✓			
	Availability of Indoor Games			✓		
	Conduction of tournaments		✓	✓		
CANTEEN	Food price		✓			
	Hygienic food		✓			
	Clean place			✓		
	Quantity services			✓		
INFRASTRUCTURE	Water plant			✓		
	Parking			✓		
	Toilets			✓		
	Green Campus pedestrian friendly				✓	
AMINITIES	CCTV Surveillance		✓	✓		
	Security guards		✓	✓		
	Waste pit			✓		
	Generator			✓		



Nawab Shah Alam Khan

COLLEGE OF ENGINEERING & TECHNOLOGY

Approved by AICTE | Permitted by Govt. of Telangana | Affiliated to JNTUH

EAMCET Code: NAWB | PGCET Code : NAWB1 | POLYCET Code : NAWB

FEEDBACK COLLECTION FORM ON FACILITIES

Student Regd Number: 18RT1A0210

Branch: IT

Date: 07/08/2018

	Mode	PARAMETER	Need Improvement	Good	Satisfactory	Excellent
Feedback Collection Form on facilities	LIBRARY	Are the required number of titles in your subject available in the library			✓	
		Do you have the facility of Digital Library	✓			
	INTERNET	Are you able to access internet center as and when required		✓		
		Are you making use of educational online resources			✓	
		Are there enough number of nodes available in the internet center		✓		
		Are the net center staff co-Operative and helpful			✓	
		Do you have free campus/departmental WI-FI			✓	
	LAB	Availability of Equipment		✓		
		Working condition of Equipment			✓	
		Staff support in lab			✓	
		Fire safety		✓		
	CLASS ROOM	Size of class room				✓
		Lighting and ventilation			✓	
		Projector			✓	
		Smart class with smart board	✓			
	SPORTS FACILITY	Availability of variety of Sports			✓	
		Availability of Sports material (ball, bat etc)		✓		
		Availability of Indoor Games			✓	
		Conduction of tournaments			✓	
	CANTEEN	Food price		✓		✓
		Hygienic food			✓	
		Clean place			✓	✓
		Quantity services		✓		
	INFRASTRUCTURE	Water plant		✓		
		Parking				✓
		Toilets		✓		
		Green Campus pedestrian friendly				✓
	AMINITIES	CCTV Surveillance			✓	
		Security guards			✓	
		Waste pit			✓	
		Generator			✓	



Nawab Shah Alam Khan

COLLEGE OF ENGINEERING & TECHNOLOGY

Approved by AICTE | Permitted by Govt. of Telangana | Affiliated to JNTUH

EAMCET Code: NAWB | PGCET Code : NAWB1 | POLYCET Code : NAWB

FEEDBACK COLLECTION FORM ON FACILITIES

Student Regd Number: 18RT1A1243 Branch: IT

Date: 28/5/18

	Mode	PARAMETER	Need Improvement	Good	Satisfactory	Excellent
Feedback Collection Form on facilities	LIBRARY	Are the required number of titles in your subject available in the library		✓		
		Do you have the facility of Digital Library		✓		
	INTERNET	Are you able to access internet center as and when required		✓		
		Are you making use of educational online resources			✓	
		Are there enough number of nodes available in the internet center			✓	
		Are the net center staff co-Operative and helpful			✓	
		Do you have free campus/departmental WI-FI		✓		
		LAB	Availability of Equipment		✓	
	Working condition of Equipment			✓		
	Staff support in lab				✓	
	Fire safety				✓	
	CLASS ROOM	Size of class room			✓	
		Lighting and ventilation			✓	
		Projector			✓	
		Smart class with smart board			✓	
	SPORTS FACILITY	Availability of variety of Sports			✓	
		Availability of Sports material (ball, bat etc)		✓		
		Availability of Indoor Games		✓		
		Conduction of tournaments		✓		
	CANTEEN	Food price				✓
		Hygienic food				✓
		Clean place			✓	
		Quantity			✓	
		services			✓	
	INFRASTRUCTURE	Water plant			✓	
		Parking		✓		
		Toilets			✓	
		Green Campus pedestrian friendly				✓
AMINITIES	CCTV Surveillance			✓		
	Security guards			✓		
	Waste pit			✓		
	Generator		✓			



Nawab Shah Alam Khan

COLLEGE OF ENGINEERING & TECHNOLOGY

Approved by AICTE | Permitted by Govt. of Telangana | Affiliated to JNTUH

EAMCET Code: NAWB | PGCET Code : NAWB1 | POLYCET Code : NAWB

FEEDBACK COLLECTION FORM ON FACILITIES

Student Regd Number: 18RTIA/259

Branch: IT

Date: 11/2/19

	Mode	PARAMETER	Need Improvement	Good	Satisfactory	Excellent
Feedback Collection Form on facilities	LIBRARY	Are the required number of titles in your subject available in the library		✓		
		Do you have the facility of Digital Library		✓		
	INTERNET	Are you able to access internet center as and when required		✓		
		Are you making use of educational online resources			✓	
		Are there enough number of nodes available in the internet center			✓	
		Are the net center staff co-Operative and helpful			✓	
		Do you have free campus/departmental WI-FI			✓	
	LAB	Availability of Equipment		✓		
		Working condition of Equipment		✓		
		Staff support in lab			✓	
		Fire safety			✓	
	CLASS ROOM	Size of class room			✓	
		Lighting and ventilation			✓	
		Projector			✓	
	SPORTS FACILITY	Smart class with smart board	✓			
		Availability of variety of Sports			✓	
		Availability of Sports material (ball, bat etc)	✓			
		Availability of Indoor Games		✓		
	CANTEEN	Conduction of tournaments		✓		
		Food price		✓		
		Hygienic food		✓		
		Clean place			✓	
		Quantity services			✓	
	INFRASTRUCTURE	Water plant			✓	
		Parking			✓	
		Toilets			✓	
		Green Campus pedestrian friendly				✓
	AMINITIES	CCTV Surveillance			✓	
		Security guards			✓	
		Waste pit			✓	
		Generator			✓	



Nawab Shah Alam Khan

COLLEGE OF ENGINEERING & TECHNOLOGY

Approved by AICTE | Permitted by Govt. of Telangana | Affiliated to JNTUH

EAMCET Code: NAWB | PGCET Code : NAWB1 | POLYCET Code : NAWB

FEEDBACK COLLECTION FORM ON FACILITIES

Student Regd Number:

187RT1A1240 Branch: IT

Date:

19/12/18

Mode	PARAMETER	Need Improvement	Good	Satisfactory	Excellent
LIBRARY	Are the required number of titles in your subject available in the library		✓		
	Do you have the facility of Digital Library		✓		
INTERNET	Are you able to access internet center as and when required		✓	✓	
	Are you making use of educational online resources			✓	
	Are there enough number of nodes available in the internet center			✓	
	Are the net center staff co-Operative and helpful			✓	
	Do you have free campus/departmental WI-FI			✓	
LAB	Availability of Equipment			✓	
	Working condition of Equipment			✓	
	Staff support in lab			✓	
	Fire safety			✓	
CLASS ROOM	Size of class room			✓	
	Lighting and ventilation			✓	
	Projector			✓	
	Smart class with smart board		✓		
SPORTS FACILITY	Availability of variety of Sports		✓		
	Availability of Sports material (ball, bat etc)	✓			
	Availability of Indoor Games	✓			
	Conduction of tournaments		✓		
CANTEEN	Food price			✓	
	Hygienic food			✓	
	Clean place			✓	
	Quantity			✓	
	services			✓	
INFRASTRUCTURE	Water plant			✓	
	Parking			✓	
	Toilets		✓		
	Green Campus pedestrian friendly				✓
AMINITIES	CCTV Surveillance			✓	
	Security guards		✓		
	Waste pit			✓	
	Generator			✓	



Nawab Shah Alam Khan

COLLEGE OF ENGINEERING & TECHNOLOGY

Approved by AICTE | Permitted by Govt. of Telangana | Affiliated to JNTUH

EAMCET Code: NAWB | PGECET Code : NAWB1 | POLYCET Code : NAWB

FEEDBACK COLLECTION FORM ON FACILITIES

Student Regd Number: 18RT1A1011

Branch: IT

Date: 05/02/2019

Mode	PARAMETER	Need Improvement	Good	Satisfactory	Excellent
LIBRARY	Are the required number of titles in your subject available in the library	✓			
	Do you have the facility of Digital Library		✓		
INTERNET	Are you able to access internet center as and when required			✓	
	Are you making use of educational online resources		✓		
	Are there enough number of nodes available in the internet center				✓
	Are the net center staff co-Operative and helpful			✓	
	Do you have free campus/departmental WI-FI	✓		✓	
LAB	Availability of Equipment			✓	
	Working condition of Equipment			✓	
	Staff support in lab		✓		
	Fire safety			✓	
CLASS ROOM	Size of class room			✓	
	Lighting and ventilation		✓		
	Projector			✓	
	Smart class with smart board	✓			
SPORTS FACILITY	Availability of variety of Sports			✓	
	Availability of Sports material (ball, bat etc)			✓	
	Availability of Indoor Games			✓	
	Conduction of tournaments		✓		
CANTEEN	Food price			✓	
	Hygienic food			✓	✓
	Clean place			✓	
	Quantity services			✓	✓
INFRASTRUCTURE	Water plant		✓		
	Parking				✓
	Toilets	✓			✓
	Green Campus pedestrian friendly				✓
AMINITIES	CCTV Surveillance			✓	
	Security guards		✓	✓	
	Waste pit		✓		
	Generator			✓	



Nawab Shah Alam Khan

COLLEGE OF ENGINEERING & TECHNOLOGY

Approved by AICTE | Permitted by Govt. of Telangana | Affiliated to JNTUH

EAMCET Code: NAWB | PGEET Code : NAWB1 | POLYCEET Code : NAWB

FEEDBACK COLLECTION FORM ON FACILITIES

Student Regd Number: 17RT1A1296

Branch: IT

Date: 21/11/18

Feedback Collection Form on facilities	Mode	PARAMETER	Need Improvement	Good	Satisfactory	Excellent
	LIBRARY	Are the required number of titles in your subject available in the library			✓	
		Do you have the facility of Digital Library			✓	
	INTERNET	Are you able to access internet center as and when required			✓	
		Are you making use of educational online resources			✓	
		Are there enough number of nodes available in the internet center			✓	
		Are the net center staff co-Operative and helpful			✓	
		Do you have free campus/departmental WI-FI			✓	
		Availability of Equipment			✓	
	LAB	Working condition of Equipment		✓		
		Staff support in lab			✓	
		Fire safety	✓			
		Size of class room			✓	
	CLASS ROOM	Lighting and ventilation			✓	
		Projector			✓	
		Smart class with smart board		✓	✓	
	SPORTS FACILITY	Availability of variety of Sports	✓			
		Availability of Sports material (ball, bat etc)		✓		
		Availability of Indoor Games		✓		
		Conduction of tournaments		✓		
	CANTEEN	Food price			✓	
		Hygienic food			✓	
		Clean place			✓	
		Quantity			✓	
		services			✓	
	INFRASTRUCTURE	Water plant			✓	
		Parking			✓	
		Toilets		✓		
		Green Campus pedestrian friendly				✓
	AMINITIES	CCTV Surveillance			✓	
		Security guards				✓
		Waste pit			✓	
		Generator		✓		



Nawab Shah Alam Khan

COLLEGE OF ENGINEERING & TECHNOLOGY

Approved by AICTE | Permitted by Govt. of Telangana | Affiliated to JNTUH

EAMCET Code: NAWB | PGCET Code : NAWB1 | POLYCET Code : NAWB

FEEDBACK COLLECTION FORM ON FACILITIES

Student Regd Number: 17RTAD1206

Branch: IT

Date: 11/12/2018

	Mode	PARAMETER	Need Improvement	Good	Satisfactory	Excellent
Feedback Collection Form on facilities	LIBRARY	Are the required number of titles in your subject available in the library	✓		✓	
		Do you have the facility of Digital Library		✓		
	INTERNET	Are you able to access internet center as and when required			✓	
		Are you making use of educational online resources		✓		
		Are there enough number of nodes available in the internet center			✓	
		Are the net center staff co-Operative and helpful		✓		
		Do you have free campus/departmental WI-FI			✓	
		Availability of Equipment		✓		✓
	LAB	Working condition of Equipment			✓	
		Staff support in lab				✓
		Fire safety			✓	
		Size of class room		✓		
	CLASS ROOM	Lighting and ventilation			✓	
		Projector			✓	
		Smart class with smart board	✓			
	SPORTS FACILITY	Availability of variety of Sports			✓	
		Availability of Sports material (ball, bat etc)			✓	
		Availability of Indoor Games		✓		
		Conduction of tournaments			✓	
	CANTEEN	Food price			✓	
		Hygienic food			✓	
		Clean place			✓	
		Quantity		✓		✓
		services			✓	
	INFRASTRUCTURE	Water plant			✓	
		Parking			✓	
		Toilets		✓		✓
		Green Campus pedestrian friendly				✓
	AMINITIES	CCTV Surveillance			✓	
		Security guards		✓		
		Waste pit		✓		
		Generator			✓	



Nawab Shah Alam Khan

COLLEGE OF ENGINEERING & TECHNOLOGY

Approved by AICTE | Permitted by Govt. of Telangana | Affiliated to JNTUH

EAMCET Code: NAWB | PGCET Code : NAWB1 | POLYCET Code : NAWB

FEEDBACK COLLECTION FORM ON FACILITIES

Student Regd Number: 15RT1A027 Branch: IT

Date: 14-8-18

Mode	PARAMETER	Need Improvement	Good	Satisfactory	Excellent	
LIBRARY	Are the required number of titles in your subject available in the library	✓				
	Do you have the facility of Digital Library			✓		
INTERNET	Are you able to access internet center as and when required		✓			
	Are you making use of educational online resources			✓		
	Are there enough number of nodes available in the internet center		✓			
	Are the net center staff co-Operative and helpful			✓		
	Do you have free campus/departmental WI-FI		✓			
	LAB	Availability of Equipment			✓	
		Working condition of Equipment			✓	
Staff support in lab			✓			
Fire safety				✓		
CLASS ROOM	Size of class room			✓		
	Lighting and ventilation			✓		
	Projector			✓		
	Smart class with smart board	✓				
SPORTS FACILITY	Availability of variety of Sports			✓		
	Availability of Sports material (ball, bat etc)			✓		
	Availability of Indoor Games		✓			
	Conduction of tournaments			✓		
CANTEEN	Food price		✓			
	Hygienic food			✓		
	Clean place			✓		
	Quantity services			✓		
INFRASTRUCTURE	Water plant		✓			
	Parking			✓		
	Toilets		✓			
	Green Campus pedestrian friendly			✓		
AMINITIES	CCTV Surveillance			✓		
	Security guards			✓		
	Waste pit			✓		
	Generator		✓			



Nawab Shah Alam Khan

COLLEGE OF ENGINEERING & TECHNOLOGY

Approved by AICTE | Permitted by Govt. of Telangana | Affiliated to JNTUH

EAMCET Code: NAWB | PGCET Code : NAWB1 | POLYCET Code : NAWB

FEEDBACK COLLECTION FORM ON FACILITIES

Student Regd Number: 17RT1A1259 Branch: IT

Date: 18/11/19

	Mode	PARAMETER	Need Improvement	Good	Satisfactory	Excellent
	LIBRARY	Are the required number of titles in your subject available in the library				✓
		Do you have the facility of Digital Library				✓
	INTERNET	Are you able to access internet center as and when required			✓	
		Are you making use of educational online resources			✓	
		Are there enough number of nodes available in the internet center			✓	
		Are the net center staff co-Operative and helpful			✓	
		Do you have free campus/departmental WI-FI			✓	
	LAB	Availability of Equipment		✓		
		Working condition of Equipment			✓	
		Staff support in lab			✓	
		Fire safety	✓			
	CLASS ROOM	Size of class room			✓	
		Lighting and ventilation			✓	
		Projector			✓	
		Smart class with smart board		✓	✓	
	SPORTS FACILITY	Availability of variety of Sports	✓			
		Availability of Sports material (ball, bat etc)		✓		
		Availability of Indoor Games	✓			
		Conduction of tournaments	✓			
	CANTEEN	Food price			✓	
		Hygienic food			✓	
		Clean place			✓	
		Quantity			✓	
		services			✓	
	INFRASTRUCTURE	Water plant			✓	
		Parking		✓		
		Toilets			✓	
		Green Campus pedestrian friendly				✓
	AMINITIES	CCTV Surveillance			✓	
		Security guards			✓	
		Waste pit		✓		
		Generator		✓		

Feedback
Collection
Form on
facilities



Nawab Shah Alam Khan

COLLEGE OF ENGINEERING & TECHNOLOGY

Approved by AICTE | Permitted by Govt. of Telangana | Affiliated to JNTUH

EAMCET Code: NAWB | PGCET Code : NAWB1 | POLYCET Code : NAWB

FEEDBACK COLLECTION FORM ON FACILITIES

Student Regd Number: 15RT1A01235 Branch: IT

Date: 5/11/18

Mode	PARAMETER	Need Improvement	Good	Satisfactory	Excellent
Feedback Collection Form on facilities	LIBRARY	Are the required number of titles in your subject available in the library	✓	✓	
		Do you have the facility of Digital Library		✓	
	INTERNET	Are you able to access internet center as and when required		✓	
		Are you making use of educational online resources		✓	
		Are there enough number of nodes available in the internet center		✓	
		Are the net center staff co-Operative and helpful		✓	
		Do you have free campus/departmental WI-FI	✓		
	LAB	Availability of Equipment		✓	
		Working condition of Equipment		✓	
		Staff support in lab		✓	
		Fire safety	✓		
	CLASS ROOM	Size of class room		✓	
		Lighting and ventilation			✓
		Projector		✓	
		Smart class with smart board	✓		
	SPORTS FACILITY	Availability of variety of Sports		✓	
		Availability of Sports material (ball, bat etc)			✓
		Availability of Indoor Games		✓	
		Conduction of tournaments	✓		
	CANTEEN	Food price		✓	
		Hygienic food		✓	
		Clean place		✓	
		Quantity services	✓		✓
	INFRASTRUCTURE	Water plant		✓	
		Parking		✓	
		Toilets	✓	✓	
		Green Campus pedestrian friendly	✓		✓
	AMINITIES	CCTV Surveillance		✓	
		Security guards		✓	
		Waste pit		✓	
		Generator	✓		



Nawab Shah Alam Khan

COLLEGE OF ENGINEERING & TECHNOLOGY

Approved by AICTE | Permitted by Govt. of Telangana | Affiliated to JNTUH

EAMCET Code: NAWB | PGCET Code : NAWB1 | POLYCET Code : NAWB

FEEDBACK COLLECTION FORM ON FACILITIES

Student Regd Number: 15RT/A1296 Branch: IT

Date: 31/12/18

Mode	PARAMETER	Need Improvement	Good	Satisfactory	Excellent
LIBRARY	Are the required number of titles in your subject available in the library				✓
	Do you have the facility of Digital Library				✓
INTERNET	Are you able to access internet center as and when required			✓	
	Are you making use of educational online resources			✓	
	Are there enough number of nodes available in the internet center			✓	
	Are the net center staff co-Operative and helpful			✓	
	Do you have free campus/departmental WI-FI			✓	
				✓	
LAB	Availability of Equipment			✓	
	Working condition of Equipment		✓		
	Staff support in lab			✓	
	Fire safety			✓	
CLASS ROOM	Size of class room			✓	
	Lighting and ventilation			✓	
	Projector			✓	
	Smart class with smart board	✓			
SPORTS FACILITY	Availability of variety of Sports			✓	
	Availability of Sports material (ball, bat etc)			✓	
	Availability of Indoor Games			✓	
	Conduction of tournaments			✓	
CANTEEN	Food price			✓	
	Hygienic food		✓		
	Clean place			✓	
	Quantity			✓	
	services			✓	
INFRASTRUCTURE	Water plant			✓	✓
	Parking			✓	
	Toilets		✓		
	Green Campus pedestrian friendly			✓	✓
				✓	
AMINITIES	CCTV Surveillance			✓	
	Security guards			✓	✓
	Waste pit			✓	
	Generator	✓	✓		
				✓	



Nawab Shah Alam Khan

COLLEGE OF ENGINEERING & TECHNOLOGY

Approved by AICTE | Permitted by Govt. of Telangana | Affiliated to JNTUH

EAMCET Code: NAWB | PGECET Code : NAWB1 | POLYCET Code : NAWB

FEEDBACK COLLECTION FORM ON FACILITIES

Student Regd Number: 17RTTA01229 Branch: IT

Date: 7/1/19

Mode	PARAMETER	Need Improvement	Good	Satisfactory	Excellent
LIBRARY	Are the required number of titles in your subject available in the library			✓	
	Do you have the facility of Digital Library			✓	
INTERNET	Are you able to access internet center as and when required			✓	
	Are you making use of educational online resources				✓
	Are there enough number of nodes available in the internet center			✓	
	Are the net center staff co-Operative and helpful		✓		
	Do you have free campus/departmental WI-FI			✓	
	Availability of Equipment			✓	
LAB	Working condition of Equipment			✓	
	Staff support in lab		✓		
	Fire safety			✓	
	Size of class room				✓
CLASS ROOM	Lighting and ventilation			✓	
	Projector				✓
	Smart class with smart board	✓		✓	
	Availability of variety of Sports		✓		
SPORTS FACILITY	Availability of Sports material (ball, bat etc)			✓	
	Availability of Indoor Games			✓	
	Conduction of tournaments		✓		
	Food price			✓	
CANTEEN	Hygienic food			✓	
	Clean place		✓		
	Quantity			✓	
	services		✓		
INFRASTRUCTURE	Water plant		✓		
	Parking			✓	
	Toilets		✓		
	Green Campus pedestrian friendly			✓	✓
AMINITIES	CCTV Surveillance			✓	
	Security guards		✓		
	Waste pit			✓	
	Generator			✓	



Nawab Shah Alam Khan

COLLEGE OF ENGINEERING & TECHNOLOGY

Approved by AICTE | Permitted by Govt. of Telangana | Affiliated to JNTUH

EAMCET Code: NAWB | PGCET Code : NAWB1 | POLYCET Code : NAWB

FEEDBACK COLLECTION FORM ON FACILITIES

Student Regd Number: 16RTIA1287

Branch: IT

Date: 11/12/18

	Mode	PARAMETER	Need Improvement	Good	Satisfactory	Excellent
Feedback Collection Form on facilities	LIBRARY	Are the required number of titles in your subject available in the library				✓
		Do you have the facility of Digital Library				✓
	INTERNET	Are you able to access internet center as and when required			✓	
		Are you making use of educational online resources			✓	
		Are there enough number of nodes available in the internet center			✓	
		Are the net center staff co-Operative and helpful			✓	
		Do you have free campus/departmental WI-FI			✓	
	LAB	Availability of Equipment		✓		
		Working condition of Equipment			✓	
		Staff support in lab			✓	
		Fire safety			✓	
	CLASS ROOM	Size of class room			✓	
		Lighting and ventilation			✓	
		Projector			✓	
		Smart class with smart board	✓			
	SPORTS FACILITY	Availability of variety of Sports			✓	
		Availability of Sports material (ball, bat etc)				✓
		Availability of Indoor Games			✓	
		Conduction of tournaments			✓	
	CANTEEN	Food price			✓	
		Hygienic food			✓	
		Clean place			✓	
		Quantity			✓	
		services			✓	
	INFRASTRUCTURE	Water plant		✓		
		Parking			✓	
		Toilets			✓	
		Green Campus pedestrian friendly				✓
	AMINITIES	CCTV Surveillance			✓	
		Security guards			✓	
		Waste pit		✓		
		Generator		✓		



Nawab Shah Alam Khan

COLLEGE OF ENGINEERING & TECHNOLOGY

Approved by AICTE | Permitted by Govt. of Telangana | Affiliated to JNTUH

EAMCET Code: NAWB | PGECET Code : NAWB1 | POLYCET Code : NAWB

FEEDBACK COLLECTION FORM ON FACILITIES

Student Regd Number: 15RT1A01206 Branch: IT

Date: 15/01/2019

Mode	PARAMETER	Need Improvement	Good	Satisfactory	Excellent
LIBRARY	Are the required number of titles in your subject available in the library			✓	
	Do you have the facility of Digital Library		✓		
INTERNET	Are you able to access internet center as and when required			✓	
	Are you making use of educational online resources			✓	
	Are there enough number of nodes available in the internet center		✓		
	Are the net center staff co-Operative and helpful			✓	
	Do you have free campus/departmental WI-FI			✓	
LAB	Availability of Equipment			✓	
	Working condition of Equipment				✓
	Staff support in lab			✓	
	Fire safety			✓	
CLASS ROOM	Size of class room				✓
	Lighting and ventilation				✓
	Projector			✓	
	Smart class with smart board	✓			
SPORTS FACILITY	Availability of variety of Sports		✓		
	Availability of Sports material (ball, bat etc)			✓	
	Availability of Indoor Games			✓	
	Conduction of tournaments			✓	
CANTEEN	Food price		✓		
	Hygienic food			✓	
	Clean place			✓	
	Quantity			✓	
	services			✓	
INFRASTRUCTURE	Water plant			✓	
	Parking				✓
	Toilets		✓		
	Green Campus pedestrian friendly				✓
AMINITIES	CCTV Surveillance			✓	
	Security guards				✓
	Waste pit		✓		
	Generator			✓	



Nawab Shah Alam Khan

COLLEGE OF ENGINEERING & TECHNOLOGY

Approved by AICTE | Permitted by Govt. of Telangana | Affiliated to JNTUH

EAMCET Code: NAWB | PGCET Code : NAWB1 | POLYCET Code : NAWB

FEEDBACK COLLECTION FORM ON FACILITIES

Student Regd Number: 15RTIA1212

Branch: IT

Date: 12-12-18

Mode	PARAMETER	Need Improvement	Good	Satisfactory	Excellent
LIBRARY	Are the required number of titles in your subject available in the library			✓	
	Do you have the facility of Digital Library			✓	
INTERNET	Are you able to access internet center as and when required			✓	
	Are you making use of educational online resources		✓		
	Are there enough number of nodes available in the internet center			✓	
	Are the net center staff co-Operative and helpful		✓		
	Do you have free campus/departmental WI-FI			✓	
	Availability of Equipment			✓	
LAB	Working condition of Equipment		✓		
	Staff support in lab			✓	
	Fire safety			✓	
	Size of class room			✓	
CLASS ROOM	Lighting and ventilation			✓	
	Projector			✓	
	Smart class with smart board	✓			
	Availability of variety of Sports			✓	
SPORTS FACILITY	Availability of Sports material (ball, bat etc)			✓	
	Availability of Indoor Games		✓		
	Conduction of tournaments			✓	
	Food price			✓	
CANTEEN	Hygienic food			✓	
	Clean place		✓		
	Quantity		✓		
	services		✓		
INFRASTRUCTURE	Water plant			✓	
	Parking		✓		
	Toilets			✓	
	Green Campus pedestrian friendly			✓	
AMINITIES	CCTV Surveillance			✓	
	Security guards			✓	
	Waste pit		✓		
	Generator			✓	



Nawab Shah Alam Khan

COLLEGE OF ENGINEERING & TECHNOLOGY

Approved by AICTE | Permitted by Govt. of Telangana | Affiliated to JNTUH

EAMCET Code: NAWB | PGECET Code : NAWB1 | POLYCET Code : NAWB

FEEDBACK COLLECTION FORM ON FACILITIES

Student Regd Number: 16RT1A1235 Branch: IT

Date: 14/12/18

Mode	PARAMETER	Need Improvement	Good	Satisfactory	Excellent
LIBRARY	Are the required number of titles in your subject available in the library				✓
	Do you have the facility of Digital Library				✓
INTERNET	Are you able to access internet center as and when required			✓	
	Are you making use of educational online resources			✓	
	Are there enough number of nodes available in the internet center			✓	
	Are the net center staff co-Operative and helpful			✓	
	Do you have free campus/departmental WI-FI		✓		
LAB	Availability of Equipment			✓	
	Working condition of Equipment			✓	
	Staff support in lab			✓	
	Fire safety			✓	
CLASS ROOM	Size of class room			✓	
	Lighting and ventilation			✓	
	Projector			✓	
	Smart class with smart board	✓			
SPORTS FACILITY	Availability of variety of Sports			✓	
	Availability of Sports material (ball, bat etc)			✓	
	Availability of Indoor Games		✓		
	Conduction of tournaments		✓		
CANTEEN	Food price	✓			
	Hygienic food			✓	
	Clean place			✓	
	Quantity services			✓	
INFRASTRUCTURE	Water plant			✓	
	Parking				✓
	Toilets			✓	
	Green Campus pedestrian friendly				✓
AMINITIES	CCTV Surveillance			✓	
	Security guards				✓
	Waste pit			✓	
	Generator		✓		



Nawab Shah Alam Khan

COLLEGE OF ENGINEERING & TECHNOLOGY

Approved by AICTE | Permitted by Govt. of Telangana | Affiliated to JNTUH

EAMCET Code: NAWB | PGCET Code : NAWB1 | POLYCET Code : NAWB

FEEDBACK COLLECTION FORM ON FACILITIES

Student Regd Number: 15RT/A/244 Branch: IT

Date: 14/12/18

	Mode	PARAMETER	Need Improvement	Good	Satisfactory	Excellent
Feedback Collection Form on facilities	LIBRARY	Are the required number of titles in your subject available in the library				✓
		Do you have the facility of Digital Library				✓
	INTERNET	Are you able to access internet center as and when required			✓	
		Are you making use of educational online resources			✓	
		Are there enough number of nodes available in the internet center			✓	
		Are the net center staff co-Operative and helpful			✓	
		Do you have free campus/departmental WI-FI			✓	
	LAB	Availability of Equipment			✓	
		Working condition of Equipment			✓	
		Staff support in lab			✓	
		Fire safety	✓			
	CLASS ROOM	Size of class room			✓	
		Lighting and ventilation			✓	
		Projector			✓	
		Smart class with smart board	✓			
	SPORTS FACILITY	Availability of variety of Sports			✓	
		Availability of Sports material (ball, bat etc)		✓		
		Availability of Indoor Games		✓		
		Conduction of tournaments			✓	
	CANTEEN	Food price	✓			
		Hygienic food			✓	
		Clean place			✓	
		Quantity			✓	
		services			✓	
	INFRASTRUCTURE	Water plant			✓	
		Parking				✓
		Toilets			✓	
		Green Campus pedestrian friendly			✓	
	AMINITIES	CCTV Surveillance			✓	
		Security guards				✓
		Waste pit			✓	
		Generator			✓	



Nawab Shah Alam Khan

COLLEGE OF ENGINEERING & TECHNOLOGY

Approved by AICTE | Permitted by Govt. of Telangana | Affiliated to JNTUH

EAMCET Code: NAWB | PGECET Code : NAWB1 | POLYCET Code : NAWB

FEEDBACK COLLECTION FORM ON FACILITIES

Student Regd Number: 11RTIA1220

Branch: IT

Date: 14/1/2018

Mode	PARAMETER	Need Improvement	Good	Satisfactory	Excellent
LIBRARY	Are the required number of titles in your subject available in the library				
	Do you have the facility of Digital Library				
INTERNET	Are you able to access internet center as and when required				
	Are you making use of educational online resources				
	Are there enough number of nodes available in the internet center				
	Are the net center staff co-Operative and helpful				
	Do you have free campus/departmental WI-FI				
LAB	Availability of Equipment				
	Working condition of Equipment				
	Staff support in lab				
	Fire safety				
CLASS ROOM	Size of class room				
	Lighting and ventilation				
	Projector				
	Smart class with smart board				
SPORTS FACILITY	Availability of variety of Sports				
	Availability of Sports material (ball, bat etc)				
	Availability of Indoor Games				
	Conduction of tournaments				
CANTEEN	Food price				
	Hygienic food				
	Clean place				
	Quantity services				
INFRASTRUCTURE	Water plant				
	Parking				
	Toilets				
	Green Campus pedestrian friendly				
AMINITIES	CCTV Surveillance				
	Security guards				
	Waste pit				
	Generator				



Nawab Shah Alam Khan

COLLEGE OF ENGINEERING & TECHNOLOGY

Approved by AICTE | Permitted by Govt. of Telangana | Affiliated to JNTUH

EAMCET Code: NAWB | PGCET Code : NAWB1 | POLYCET Code : NAWB

FEEDBACK COLLECTION FORM ON FACILITIES

Student Regd Number: 5RT1A01208 Branch: IT

Date: 12/11/18

Mode	PARAMETER	Need Improvement	Good	Satisfactory	Excellent
LIBRARY	Are the required number of titles in your subject available in the library				
	Do you have the facility of Digital Library				
INTERNET	Are you able to access internet center as and when required				
	Are you making use of educational online resources				
	Are there enough number of nodes available in the internet center				
	Are the net center staff co-Operative and helpful				
	Do you have free campus/departmental WI-FI				
LAB	Availability of Equipment				
	Working condition of Equipment				
	Staff support in lab				
	Fire safety				
CLASS ROOM	Size of class room				
	Lighting and ventilation				
	Projector				
	Smart class with smart board				
SPORTS FACILITY	Availability of variety of Sports				
	Availability of Sports material (ball, bat etc)				
	Availability of Indoor Games				
	Conduction of tournaments				
CANTEEN	Food price				
	Hygienic food				
	Clean place				
	Quantity services				
INFRASTRUCTURE	Water plant				
	Parking				
	Toilets				
	Green Campus pedestrian friendly				
AMINITIES	CCTV Surveillance				
	Security guards				
	Waste pit				
	Generator				



Nawab Shah Alam Khan

COLLEGE OF ENGINEERING & TECHNOLOGY

Approved by AICTE | Permitted by Govt. of Telangana | Affiliated to JNTUH

EAMCET Code: NAWB | PGECET Code : NAWB1 | POLYCET Code : NAWB

FEEDBACK COLLECTION FORM ON FACILITIES

Student Regd Number: 15RT1A1246

Branch: IT

Date: 24/12/18

	Mode	PARAMETER	Need Improvement	Good	Satisfactory	Excellent
Feedback Collection Form on facilities	LIBRARY	Are the required number of titles in your subject available in the library				✓
		Do you have the facility of Digital Library				✓
	INTERNET	Are you able to access internet center as and when required			✓	
		Are you making use of educational online resources			✓	
		Are there enough number of nodes available in the internet center			✓	
		Are the net center staff co-Operative and helpful			✓	
		Do you have free campus/departmental WI-FI			✓	
	LAB	Availability of Equipment		✓		
		Working condition of Equipment			✓	
		Staff support in lab			✓	
		Fire safety	✓			
	CLASS ROOM	Size of class room			✓	
		Lighting and ventilation			✓	
		Projector			✓	
		Smart class with smart board			✓	
	SPORTS FACILITY	Availability of variety of Sports	✓			
		Availability of Sports material (ball, bat etc)	✓			
		Availability of Indoor Games	✓			
		Conduction of tournaments		✓		
	CANTEEN	Food price	✓			
		Hygienic food			✓	
		Clean place			✓	
		Quantity			✓	
		services			✓	
	INFRASTRUCTURE	Water plant			✓	
		Parking			✓	
		Toilets			✓	
		Green Campus pedestrian friendly				✓
	AMINITIES	CCTV Surveillance			✓	
		Security guards			✓	
		Waste pit				✓
		Generator			✓	



Nawab Shah Alam Khan

COLLEGE OF ENGINEERING & TECHNOLOGY

Approved by AICTE | Permitted by Govt. of Telangana | Affiliated to JNTUH

EAMCET Code: NAWB | PGECET Code : NAWB1 | POLYCET Code : NAWB

FEEDBACK COLLECTION FORM ON FACILITIES

Student Regd Number: 15RT/A1232 Branch: IT

Date: 17/12/18

Mode	PARAMETER	Need Improvement	Good	Satisfactory	Excellent
LIBRARY	Are the required number of titles in your subject available in the library				✓
	Do you have the facility of Digital Library				✓
INTERNET	Are you able to access internet center as and when required			✓	
	Are you making use of educational online resources			✓	
	Are there enough number of nodes available in the internet center			✓	
	Are the net center staff co-Operative and helpful			✓	
	Do you have free campus/departmental WI-FI			✓	
LAB	Availability of Equipment			✓	
	Working condition of Equipment			✓	
	Staff support in lab			✓	
	Fire safety	✓			
CLASS ROOM	Size of class room				
	Lighting and ventilation				
	Projector				
	Smart class with smart board	✓			
SPORTS FACILITY	Availability of variety of Sports	✓			
	Availability of Sports material (ball, bat etc)	✓			
	Availability of Indoor Games		✓		
	Conduction of tournaments			✓	
CANTEEN	Food price			✓	
	Hygienic food			✓	
	Clean place			✓	
	Quantity services			✓	
				✓	
INFRASTRUCTURE	Water plant			✓	
	Parking				✓
	Toilets			✓	
	Green Campus pedestrian friendly				✓
AMINITIES	CCTV Surveillance			✓	
	Security guards				✓
	Waste pit			✓	
	Generator			✓	



Nawab Shah Alam Khan

COLLEGE OF ENGINEERING & TECHNOLOGY

Approved by AICTE | Permitted by Govt. of Telangana | Affiliated to JNTUH

EAMCET Code: NAWB | PGCET Code : NAWB1 | POLYCET Code : NAWB

FEEDBACK COLLECTION FORM ON FACILITIES

Student Regd Number: 15RT1A1204 Branch: IT

Date: 22-08-18

Mode	PARAMETER	Need Improvement	Good	Satisfactory	Excellent
LIBRARY	Are the required number of titles in your subject available in the library			✓	
	Do you have the facility of Digital Library			✓	
INTERNET	Are you able to access internet center as and when required			✓	
	Are you making use of educational online resources		✓	✓	
	Are there enough number of nodes available in the internet center			✓	
	Are the net center staff co-Operative and helpful	✓			
	Do you have free campus/departmental WI-FI			✓	
	Availability of Equipment			✓	
LAB	Working condition of Equipment	✓			
	Staff support in lab			✓	
	Fire safety			✓	
	Size of class room			✓	
CLASS ROOM	Lighting and ventilation			✓	✓
	Projector			✓	
	Smart class with smart board	✓			
	Availability of variety of Sports			✓	
SPORTS FACILITY	Availability of Sports material (ball, bat etc)			✓	
	Availability of Indoor Games		✓		
	Conduction of tournaments			✓	
	Food price		✓		
CANTEEN	Hygienic food			✓	
	Clean place			✓	
	Quantity			✓	
	services			✓	
INFRASTRUCTURE	Water plant			✓	
	Parking			✓	
	Toilets			✓	
	Green Campus pedestrian friendly			✓	✓
AMINITIES	CCTV Surveillance			✓	
	Security guards		✓		
	Waste pit			✓	
	Generator		✓		

NAWAB SHAH ALAM KHAN COLLEGE OF ENGINEERING & TECHNOLOGY

Malakpet, Hyderabad


Department of Information Technology Analysis of Feedback on Facilities 2018-19

Metric score Analysis	Need Improvement	Good	Satisfactory	Excellent
Positive Feedback percentage	<35%	35%-54%	55%-74%	75%-100%
Score	0	1	2	3

Mode	PARAMETER	Total number of Responses [24]		
		Negative Response	Positive Response	Metric
LIBRARY	Are the required number of titles in your subject available in the library	15	9	1
	Do you have the facility of Digital Library	2	22	3
INTERNET	Are you able to access internet center as and when required	9	15	2
	Are you making use of educational online resources	4	20	3
	Are there enough number of nodes available in the internet center	8	16	2
	Are the net center staff co-Operative and helpful	2	22	3
	Do you have free campus/departmental WI-FI	3	21	3
LAB	Availability of Equipment	6	18	3
	Working condition of Equipment	5	19	3
	Staff support in lab	4	20	3
	Fire safety	9	15	2
CLASS ROOMS	Size of class room	1	23	3
	Lighting and ventilation	0	24	3
	Projector	5	19	3
	Smart class with smart board	15	9	1
SPORTS	Availability of variety of Sports	4	20	3
	Availability of Sports material (ball, bat etc)	10	14	2
	Availability of Indoor Games	6	18	3
	Conduction of tournaments	10	14	2

CANTEEN	Food price	9	15	2
	Hygienic food	3	21	3
	Clean place	5	19	3
	Quantity	6	18	3
	Services	4	20	3
INFRASTRUCTURE	Water plant	10	14	2
	Parking	0	24	3
	Toilets	6	18	3
	Green Campus pedestrian friendly	1	23	3
AMINITIES	CCTV Surveillance	3	21	3
	Security guards	4	20	3
	Waste pit	9	15	2
	Generator	8	16	2


Co-ordinator


HOD





Nawab Shah Alam Khan

COLLEGE OF ENGINEERING & TECHNOLOGY

Approved by AICTE | Permitted by Govt. of Telangana | Affiliated to JNTUH

EAMCET Code: NAWB | PGECET Code : NAWB1 | POLYCET Code : NAWB

Date: 04/04/2019

To:
The Principal,
NSAKCET,
Malakpet,
Hyderabad.

Sub: Improvement needs to be done on Facilities – Action Rgd.

Respected Sir,

According to the survey done on the Student feedback in the Academic year 2018-2019 on the facilities provided by the college for the department of Information Technology, we have come to a conclusion regarding some of the facilities that needs improvement.

1. Need to Increase the books in the library.
2. Smart boards are not available in Classrooms.
3. More Sports tournaments to be conducted.

This is for your kind information and necessary action.

Thanking you,

Yours Sincerely,

G. Subbarao

HOD
HEAD

Dept. of Information Technology
NAWAB SHAH ALAM KHAN COLLEGE
OF ENGINEERING & TECHNOLOGY
16-4-1/A, New Malakpet, Hyderabad-500024.



Nawab Shah Alam Khan

COLLEGE OF ENGINEERING & TECHNOLOGY

Approved by AICTE | Permitted by Govt. of Telangana | Affiliated to JNTUH

EAMCET Code: NAWB | PGECET Code : NAWB1 | POLYCET Code : NAWB

Date: 15/04/2019

To:
The Joint Secretary,
NSAKCET,
Malakpet,
Hyderabad.

Sub: Improvement for the common facilities on campus – Req-Rgd.

Respected Sir,

As per our college policy of an annual maintenance works, I am here with submitting the details of the repairs/maintenance needed on a priority basis, based on the Feedback received from the respective departments as per the following.

1. Cleanliness and maintenance of the toilets on regular basis required.
2. Need to Increase the books in the library.
3. Smart boards are not available in Classrooms.
4. System availability in the computer center is not enough.
5. More Sports tournaments to be conducted.
6. Need to increase Dust bins in campus.

I request you to kindly consider the same under the upcoming maintenance activities.

Thanking you,


PRINCIPAL



Nawab Shah Alam Khan

COLLEGE OF ENGINEERING & TECHNOLOGY

Approved by AICTE | Permitted by Govt. of Telangana | Affiliated to JNTUH

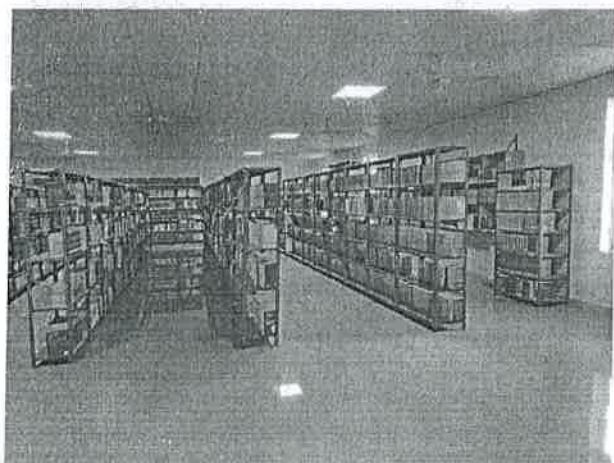
EAMCET Code: NAWB | PGCET Code : NAWB1 | POLYCET Code : NAWB

CORRECTIVE MEASURES 2018-19

Based on the Feedback analysis on facilities taken from all the departments and submitted to the management the following measures/action taken by the management to improve the facilities are as follows:

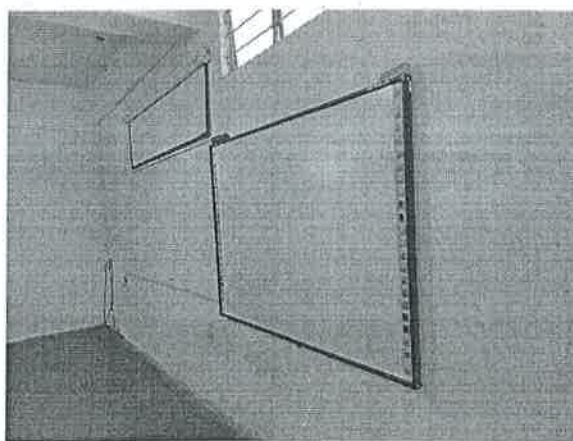
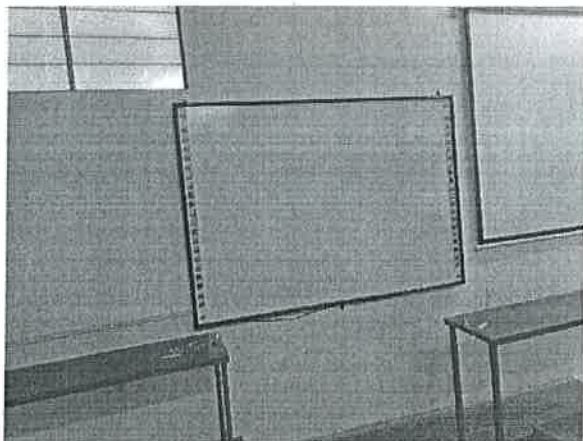
1. Library:

Books for all the respective department is increased in the library according to syllabus of their respective year.



2. Smart boards:

The Smart boards have been installed in the classrooms.

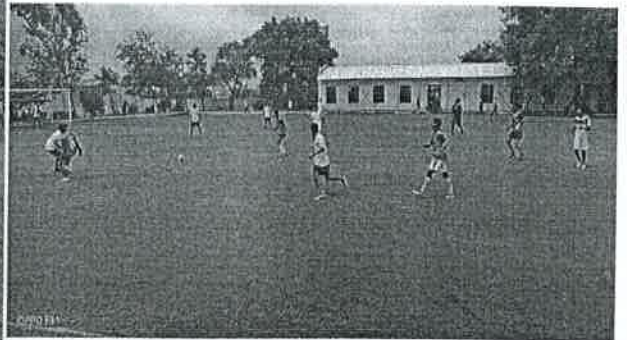
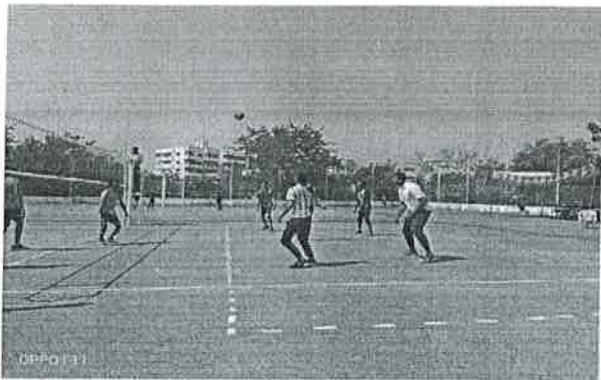


3. Tournament:

The Inter-college tournaments like volleyball, cricket, football, chess etc., have been conducted.



7-8



[Handwritten signature]



4. Computer Center:

The number of systems in the CSE computer center has been increased/repaired.



Handwritten signature or mark.

5. Dustbin:

Dustbins have been arranged in the corners of each floor of the campus.



PRINCIPAL