

9.3. Feedback on facilities:

The Institute has a process of collecting the feedback from students every semester on various facilities like Infrastructure, Laboratory, Maintenance and Library etc., the process of feedback collection is through online and suggestion box, and then forwarded to principal office after analysis in order to take the corrective measures.


The analysis process involves the following steps.

- The feedback analysis is done manually
- The feedback committee scrutinizes collected feedbacks.
- The feedbacks are quantified where all the parameters mentioned in the feedback form are analyzed.
- The analysis done based on the number of Positive and Negative responses by applying ranges of percentages as shown below.

Response	Range	Rubric
No. of Positive Response	75%-100%	3
	55%-74%	2
	35%-54%	1
	<35%	0

- After the analysis, complaints are forwarded to the principal office in order to take the corrective measures.

The below table shows the Feedback form on Facilities



Nawab Shah Alam Khan
COLLEGE OF ENGINEERING & TECHNOLOGY
Approved by AICTE | Permitted by Govt. of Telangana | Affiliated to JNTUH
EAMCET Code: NAWB | PGECET Code: NAWB1 | POLYCET Code: NAWB

FEEDBACK COLLECTION FORM ON FACILITIES

Student Regd Number: 15RT1A0553 Branch: CSE Date: 13/8/18

Mode	PARAMETER	Need Improvement	Good	Satisfactory	Excellent
LIBRARY	Are the required number of titles in your subject available in the library		<input checked="" type="checkbox"/>		
	Do you have the facility of Digital Library		<input checked="" type="checkbox"/>		
INTERNET	Are you able to access internet center as and when required		<input checked="" type="checkbox"/>		
	Are you making use of educational online resources		<input checked="" type="checkbox"/>		
	Are there enough number of nodes available in the internet center		<input checked="" type="checkbox"/>		
	Are the net center staff co-Operative and helpful		<input checked="" type="checkbox"/>		
	Do you have free campus/departmental WI-FI		<input checked="" type="checkbox"/>		
LAB	Availability of Equipment		<input checked="" type="checkbox"/>		
	Working condition of Equipment		<input checked="" type="checkbox"/>		
	Staff support in lab		<input checked="" type="checkbox"/>		
CLASS ROOM	Fire safety		<input checked="" type="checkbox"/>		
	Size of class room		<input checked="" type="checkbox"/>		
	Lighting and ventilation		<input checked="" type="checkbox"/>		
SPORTS FACILITY	Projector		<input checked="" type="checkbox"/>		
	Smart class with smart board		<input checked="" type="checkbox"/>		
	Availability of variety of Sports		<input checked="" type="checkbox"/>		
	Availability of Sports material (ball, bat etc)		<input checked="" type="checkbox"/>		
CANTEEN	Availability of Indoor Games		<input checked="" type="checkbox"/>		
	Conduction of tournaments		<input checked="" type="checkbox"/>		
	Food price		<input checked="" type="checkbox"/>		
	Hygienic food		<input checked="" type="checkbox"/>		
INFRASTRUCTURE	Clean place		<input checked="" type="checkbox"/>		
	Quantity services		<input checked="" type="checkbox"/>		
	Water plant		<input checked="" type="checkbox"/>		
	Parking		<input checked="" type="checkbox"/>		
AMINITIES	Toilets		<input checked="" type="checkbox"/>		
	Green Campus pedestrian friendly		<input checked="" type="checkbox"/>		
	CCTV Surveillance		<input checked="" type="checkbox"/>		
	Security guards		<input checked="" type="checkbox"/>		
	Waste pit		<input checked="" type="checkbox"/>		
	Generator		<input checked="" type="checkbox"/>		

(Signature)



Nawab Shah Alam Khan

COLLEGE OF ENGINEERING & TECHNOLOGY

Approved by AICTE | Permitted by Govt. of Telangana | Affiliated to JNTUH

EAMCET Code: NAWB | PGECET Code : NAWB1 | POLYCET Code : NAWB

Date: 26/03/2019

CIRCULAR

All Head of Departments are requested to submit the respective **Students Feedback on Facilities** on or before **12/04/2019** to facilitate the management's annual maintenance activities.


PRINCIPAL

Copy to:-

HOD CSE:

HOD IT:

HOD MECH:

HOD CIVIL:

HOD ECE:

HOD EEE:



Nawab Shah Alam Khan

COLLEGE OF ENGINEERING & TECHNOLOGY

Approved by AICTE | Permitted by Govt. of Telangana | Affiliated to JNTUH

EAMCET Code: NAWB | PGCET Code : NAWB1 | POLYGET Code : NAWB

Date: 26/03/2019

CIRCULAR

All Head of Departments are requested to submit the respective **Students Feedback on Facilities** on or before **12/04/2019** to facilitate the management's annual maintenance activities.


PRINCIPAL

Copy to:-

HOD CSE: 

HOD IT: 

HOD MECH: 

HOD CIVIL: 

HOD ECE: 

HOD EEE: 



Nawab Shah Alam Khan

COLLEGE OF ENGINEERING & TECHNOLOGY

Approved by AICTE | Permitted by Govt. of Telangana | Affiliated to JNTUH

EAMCET Code: NAWB | PGCET Code : NAWB1 | POLYCET Code : NAWB

FEEDBACK COLLECTION FORM ON FACILITIES

Student Regd Number: 15RT1A0553 Branch: CSE

Date: 13/8/18

Mode	PARAMETER	Need Improvement	Good	Satisfactory	Excellent
LIBRARY	Are the required number of titles in your subject available in the library		/		
	Do you have the facility of Digital Library		/		
INTERNET	Are you able to access internet center as and when required		/		
	Are you making use of educational online resources		/		
	Are there enough number of nodes available in the internet center		/		
	Are the net center staff co-Operative and helpful		/		
	Do you have free campus/departmental WI-FI		/		
LAB	Availability of Equipment		/		
	Working condition of Equipment		/		
	Staff support in lab			/	
	Fire safety		/		
CLASS ROOM	Size of class room		/		
	Lighting and ventilation			/	
	Projector	/			
	Smart class with smart board	/			
SPORTS FACILITY	Availability of variety of Sports		/		
	Availability of Sports material (ball, bat etc)			/	
	Availability of Indoor Games			/	
	Conduction of tournaments			/	
CANTEEN	Food price			/	
	Hygienic food			/	
	Clean place			/	
	Quantity			/	
	services			/	
INFRASTRUCTURE	Water plant			/	
	Parking			/	
	Toilets			/	
	Green Campus pedestrian friendly				/
AMINITIES	CCTV Surveillance			/	
	Security guards			/	
	Waste pit			/	
	Generator		/	/	.



Nawab Shah Alam Khan

COLLEGE OF ENGINEERING & TECHNOLOGY

Approved by AICTE | Permitted by Govt. of Telangana | Affiliated to JNTUH

EAMCET Code: NAWB | PGCET Code : NAWB1 | POLYCET Code : NAWB

FEEDBACK COLLECTION FORM ON FACILITIES

Student Regd Number: 188RTIAD511

Branch: CSE

Date: 19/11/2018

Mode	PARAMETER	Need Improvement	Good	Satisfactory	Excellent
LIBRARY	Are the required number of titles in your subject available in the library		✓		
	Do you have the facility of Digital Library	✓			
INTERNET	Are you able to access internet center as and when required		✓	✓	
	Are you making use of educational online resources			✓	
	Are there enough number of nodes available in the internet center			✓	
	Are the net center staff co-Operative and helpful				✓
	Do you have free campus/departmental WI-FI			✓	
LAB	Availability of Equipment			✓	
	Working condition of Equipment			✓	
	Staff support in lab				✓
	Fire safety			✓	
CLASS ROOM	Size of class room				✓
	Lighting and ventilation				✓
	Projector			✓	
	Smart class with smart board	✓			
SPORTS FACILITY	Availability of variety of Sports			✓	
	Availability of Sports material (ball, bat etc)			✓	
	Availability of Indoor Games			✓	
	Conduction of tournaments				
CANTEEN	Food price	✓			
	Hygienic food			✓	
	Clean place			✓	
	Quantity services			✓	
INFRASTRUCTURE	Water plant				✓
	Parking				✓
	Toilets		✓		
	Green Campus pedestrian friendly				✓
AMINITIES	CCTV Surveillance			✓	
	Security guards		✓		
	Waste pit			✓	
	Generator			✓	



Nawab Shah Alam Khan

COLLEGE OF ENGINEERING & TECHNOLOGY

Approved by AICTE | Permitted by Govt. of Telangana | Affiliated to JNTUH

EAMCET Code: NAWB | PGECET Code : NAWB1 | POLYCET Code : NAWB

FEEDBACK COLLECTION FORM ON FACILITIES

Student Regd Number: 18RT1A0536 Branch: CSE

Date: 23/1/19

Mode	PARAMETER	Need Improvement	Good	Satisfactory	Excellent	
LIBRARY	Are the required number of titles in your subject available in the library			<input checked="" type="checkbox"/>		
	Do you have the facility of Digital Library			<input checked="" type="checkbox"/>		
INTERNET	Are you able to access internet center as and when required		<input checked="" type="checkbox"/>			
	Are you making use of educational online resources		<input checked="" type="checkbox"/>			
	Are there enough number of nodes available in the internet center			<input checked="" type="checkbox"/>		
	Are the net center staff co-Operative and helpful		<input checked="" type="checkbox"/>			
	Do you have free campus/departmental WI-FI			<input checked="" type="checkbox"/>		
	LAB	Availability of Equipment			<input checked="" type="checkbox"/>	
		Working condition of Equipment			<input checked="" type="checkbox"/>	
Staff support in lab				<input checked="" type="checkbox"/>		
Fire safety		<input checked="" type="checkbox"/>				
CLASS ROOM	Size of class room			<input checked="" type="checkbox"/>		
	Lighting and ventilation			<input checked="" type="checkbox"/>		
	Projector			<input checked="" type="checkbox"/>		
	Smart class with smart board	<input checked="" type="checkbox"/>				
SPORTS FACILITY	Availability of variety of Sports	<input checked="" type="checkbox"/>				
	Availability of Sports material (ball, bat etc)			<input checked="" type="checkbox"/>		
	Availability of Indoor Games			<input checked="" type="checkbox"/>		
	Conduction of tournaments			<input checked="" type="checkbox"/>		
CANTEEN	Food price	<input checked="" type="checkbox"/>	<input checked="" type="checkbox"/>			
	Hygienic food		<input checked="" type="checkbox"/>	<input checked="" type="checkbox"/>		
	Clean place		<input checked="" type="checkbox"/>	<input checked="" type="checkbox"/>		
	Quantity		<input checked="" type="checkbox"/>	<input checked="" type="checkbox"/>		
	services			<input checked="" type="checkbox"/>		
INFRASTRUCTURE	Water plant			<input checked="" type="checkbox"/>		
	Parking				<input checked="" type="checkbox"/>	
	Toilets			<input checked="" type="checkbox"/>		
	Green Campus pedestrian friendly				<input checked="" type="checkbox"/>	
	AMINITIES	CCTV Surveillance			<input checked="" type="checkbox"/>	
Security guards				<input checked="" type="checkbox"/>		
Waste pit				<input checked="" type="checkbox"/>		
Generator			<input checked="" type="checkbox"/>			



Nawab Shah Alam Khan

COLLEGE OF ENGINEERING & TECHNOLOGY

Approved by AICTE | Permitted by Govt. of Telangana | Affiliated to JNTUH

EAMCET Code: NAWB | PGCET Code : NAWB1 | POLYCET Code : NAWB

FEEDBACK COLLECTION FORM ON FACILITIES

Student Regd Number: 18RTIA0503 Branch: CSE

Date: 4/12/18

	Mode	PARAMETER	Need Improvement	Good	Satisfactory	Excellent
Feedback Collection Form on facilities	LIBRARY	Are the required number of titles in your subject available in the library		✓		
		Do you have the facility of Digital Library			✓	
	INTERNET	Are you able to access internet center as and when required		✓	✓	
		Are you making use of educational online resources			✓	
		Are there enough number of nodes available in the internet center				✓
		Are the net center staff co-Operative and helpful			✓	
		Do you have free campus/departmental WI-FI			✓	
	LAB	Availability of Equipment		✓		
		Working condition of Equipment			✓	
		Staff support in lab			✓	
		Fire safety		✓		
	CLASS ROOM	Size of class room				✓
		Lighting and ventilation				✓
		Projector			✓	
		Smart class with smart board	✓			
	SPORTS FACILITY	Availability of variety of Sports			✓	
		Availability of Sports material (ball, bat etc)			✓	
		Availability of Indoor Games				✓
		Conduction of tournaments			✓	
	CANTEEN	Food price		✓		
		Hygienic food			✓	
		Clean place			✓	
		Quantity			✓	
		services				✓
	INFRASTRUCTURE	Water plant			✓	
		Parking				✓
		Toilets		✓		
		Green Campus pedestrian friendly				✓
	AMINITIES	CCTV Surveillance			✓	
		Security guards		✓		
		Waste pit		✓		
		Generator			✓	



Nawab Shah Alam Khan

COLLEGE OF ENGINEERING & TECHNOLOGY

Approved by AICTE | Permitted by Govt. of Telangana | Affiliated to JNTUH

EAMCET Code: NAWB | PGECET Code : NAWB1 | POLYCET Code : NAWB

FEEDBACK COLLECTION FORM ON FACILITIES

Student Regd Number: 18RT1A0552 Branch: CSE

Date: 7/1/19

Mode	PARAMETER	Need Improvement	Good	Satisfactory	Excellent
LIBRARY	Are the required number of titles in your subject available in the library		✓		
	Do you have the facility of Digital Library		✓		
INTERNET	Are you able to access internet center as and when required			✓	
	Are you making use of educational online resources		✓	✓	
	Are there enough number of nodes available in the internet center			✓	
	Are the net center staff co-Operative and helpful			✓	
	Do you have free campus/departmental WI-FI			✓	
LAB	Availability of Equipment			✓	
	Working condition of Equipment			✓	
	Staff support in lab		✓	✓	
	Fire safety		✓	✓	
CLASS ROOM	Size of class room	✓			
	Lighting and ventilation			✓	
	Projector			✓	
	Smart class with smart board		✓	✓	
SPORTS FACILITY	Availability of variety of Sports			✓	
	Availability of Sports material (ball, bat etc)			✓	
	Availability of Indoor Games			✓	
	Conduction of tournaments			✓	
CANTEEN	Food price	✓		✓	
	Hygienic food			✓	
	Clean place			✓	
	Quantity services			✓	
INFRASTRUCTURE	Water plant			✓	
	Parking				✓
	Toilets		✓		
	Green Campus pedestrian friendly				✓
AMINITIES	CCTV Surveillance			✓	
	Security guards				✓
	Waste pit			✓	
	Generator		✓	✓	



Nawab Shah Alam Khan

COLLEGE OF ENGINEERING & TECHNOLOGY

Approved by AICTE | Permitted by Govt. of Telangana | Affiliated to JNTUH

EAMCET Code: NAWB | PGCET Code : NAWB1 | POLYCET Code : NAWB

FEEDBACK COLLECTION FORM ON FACILITIES

Student Regd Number: 17RT1P0535

Branch: CSE

Date: 4/1/19

Mode	PARAMETER	Need	Good	Satisfactory	Excellent	
		Improvement				
LIBRARY	Are the required number of titles in your subject available in the library	✓				
	Do you have the facility of Digital Library		✓			
INTERNET	Are you able to access internet center as and when required			✓		
	Are you making use of educational online resources			✓		
	Are there enough number of nodes available in the internet center			✓		
	Are the net center staff co-Operative and helpful		✓	✓		
	Do you have free campus/departmental WI-FI			✓		
	LAB	Availability of Equipment		✓		
		Working condition of Equipment			✓	
Staff support in lab					✓	
Fire safety			✓			
CLASS ROOM	Size of class room		✓	✓		
	Lighting and ventilation			✓		
	Projector			✓		
	Smart class with smart board	✓				
SPORTS FACILITY	Availability of variety of Sports			✓		
	Availability of Sports material (ball, bat etc)		✓			
	Availability of Indoor Games			✓		
	Conduction of tournaments		✓			
CANTEEN	Food price			✓		
	Hygienic food			✓		
	Clean place				✓	
	Quantity				✓	
	services			✓		
INFRASTRUCTURE	Water plant		✓			
	Parking			✓		
	Toilets		✓			
	Green Campus pedestrian friendly				✓	
AMINITIES	CCTV Surveillance			✓		
	Security guards			✓		
	Waste pit		✓			
	Generator			✓		



Nawab Shah Alam Khan

COLLEGE OF ENGINEERING & TECHNOLOGY

Approved by AICTE | Permitted by Govt. of Telangana | Affiliated to JNTUH

EAMCET Code: NAWB | PGECET Code : NAWB1 | POLYCET Code : NAWB

FEEDBACK COLLECTION FORM ON FACILITIES

Student Regd Number: 18RT1A0550 Branch: CSE

Date: 18/2/19

Mode	PARAMETER	Need Improvement	Good	Satisfactory	Excellent
LIBRARY	Are the required number of titles in your subject available in the library		✓		
	Do you have the facility of Digital Library		✓		
INTERNET	Are you able to access internet center as and when required		✓		
	Are you making use of educational online resources		✓		
	Are there enough number of nodes available in the internet center		✓		
	Are the net center staff co-Operative and helpful	✓			
	Do you have free campus/departmental WI-FI	✓			
	Availability of Equipment		✓		
LAB	Working condition of Equipment		✓		
	Staff support in lab			✓	
	Fire safety			✓	
CLASS ROOM	Size of class room			✓	
	Lighting and ventilation			✓	
	Projector			✓	
SPORTS FACILITY	Smart class with smart board	✓			
	Availability of variety of Sports	✓			
	Availability of Sports material (ball, bat etc)	✓			
	Availability of Indoor Games		✓		
CANTEEN	Conduction of tournaments		✓		
	Food price	✓			
	Hygienic food			✓	
	Clean place			✓	
INFRASTRUCTURE	Quantity services			✓	
	Water plant			✓	
	Parking			✓	
	Toilets			✓	
	Green Campus pedestrian friendly				✓
AMINITIES	CCTV Surveillance			✓	
	Security guards				✓
	Waste pit			✓	
	Generator		✓		

Feedback Collection Form on facilities



Nawab Shah Alam Khan

COLLEGE OF ENGINEERING & TECHNOLOGY

Approved by AICTE | Permitted by Govt. of Telangana | Affiliated to JNTUH

EAMCET Code: NAWB | PGCET Code : NAWB1 | POLYCET Code : NAWB

FEEDBACK COLLECTION FORM ON FACILITIES

Student Regd Number: 17RT1A054

Branch: CSE

Date: 4/2/19

Feedback Collection Form on facilities	Mode	PARAMETER	Need Improvement	Good	Satisfactory	Excellent
	LIBRARY	Are the required number of titles in your subject available in the library	✓			
		Do you have the facility of Digital Library		✓		
	INTERNET	Are you able to access internet center as and when required			✓	
		Are you making use of educational online resources			✓	
		Are there enough number of nodes available in the internet center			✓	
		Are the net center staff co-Operative and helpful			✓	
		Do you have free campus/departmental WI-FI				✓
	LAB	Availability of Equipment			✓	
		Working condition of Equipment			✓	
		Staff support in lab			✓	
		Fire safety		✓		
	CLASS ROOM	Size of class room			✓	
		Lighting and ventilation			✓	
		Projector			✓	
		Smart class with smart board			✓	
	SPORTS FACILITY	Availability of variety of Sports		✓		
		Availability of Sports material (ball, bat etc)	✓			
		Availability of Indoor Games			✓	
		Conduction of tournaments			✓	
	CANTEEN	Food price			✓	
		Hygienic food			✓	
		Clean place			✓	
		Quantity			✓	
		services			✓	
	INFRASTRUCTURE	Water plant		✓		
		Parking			✓	
		Toilets			✓	
		Green Campus pedestrian friendly				✓
	AMINITIES	CCTV Surveillance			✓	
		Security guards			✓	
		Waste pit		✓		
		Generator			✓	



Nawab Shah Alam Khan

COLLEGE OF ENGINEERING & TECHNOLOGY

Approved by AICTE | Permitted by Govt. of Telangana | Affiliated to JNTUH

EAMCET Code: NAWB | PGECET Code : NAWB1 | POLYCET Code : NAWB

FEEDBACK COLLECTION FORM ON FACILITIES

Student Regd Number: 18RTIA0559 Branch: CSE

Date: 25/2/19

Mode	PARAMETER	Need Improvement	Good	Satisfactory	Excellent
Feedback Collection Form on facilities	LIBRARY	Are the required number of titles in your subject available in the library			
		Do you have the facility of Digital Library			
	INTERNET	Are you able to access internet center as and when required			
		Are you making use of educational online resources			
		Are there enough number of nodes available in the internet center			
		Are the net center staff co-Operative and helpful			
		Do you have free campus/departmental WI-FI			
		LAB	Availability of Equipment		
	Working condition of Equipment				
	Staff support in lab				
	Fire safety				
	CLASS ROOM	Size of class room			
		Lighting and ventilation			
		Projector			
		Smart class with smart board			
	SPORTS FACILITY	Availability of variety of Sports			
		Availability of Sports material (ball, bat etc)			
		Availability of Indoor Games			
		Conduction of tournaments			
	CANTEEN	Food price			
Hygienic food					
Clean place					
Quantity					
services					
INFRASTRUCTURE	Water plant				
	Parking				
	Toilets				
	Green Campus pedestrian friendly				
AMINITIES	CCTV Surveillance				
	Security guards				
	Waste pit				
	Generator				



Nawab Shah Alam Khan

COLLEGE OF ENGINEERING & TECHNOLOGY

Approved by AICTE | Permitted by Govt. of Telangana | Affiliated to JNTUH

EAMCET Code: NAWB | PGCET Code : NAWB1 | POLYCET Code : NAWB

FEEDBACK COLLECTION FORM ON FACILITIES

Student Regd Number: 177WMA0537 Branch: CSE

Date: 19/09/2018

	Mode	PARAMETER	Need	Good	Satisfactory	Excellent
			Improvement			
Feedback Collection Form on facilities	LIBRARY	Are the required number of titles in your subject available in the library	✓			
		Do you have the facility of Digital Library		✓		
	INTERNET	Are you able to access internet center as and when required			✓	
		Are you making use of educational online resources			✓	
		Are there enough number of nodes available in the internet center			✓	
		Are the net center staff co-Operative and helpful		✓		
		Do you have free campus/departmental WI-FI			✓	
					✓	
	LAB	Availability of Equipment			✓	
		Working condition of Equipment			✓	
		Staff support in lab				✓
		Fire safety		✓		
	CLASS ROOM	Size of class room				✓
		Lighting and ventilation				✓
		Projector			✓	
		Smart class with smart board	✓			
	SPORTS FACILITY	Availability of variety of Sports		✓		
		Availability of Sports material (ball, bat etc)		✓		
		Availability of Indoor Games			✓	
		Conduction of tournaments			✓	
	CANTEEN	Food price				✓
		Hygienic food			✓	
		Clean place			✓	
		Quantity		✓		
		services		✓		
	INFRASTRUCTURE	Water plant			✓	
		Parking				✓
		Toilets			✓	
Green Campus pedestrian friendly					✓	
AMINITIES	CCTV Surveillance			✓		
	Security guards			✓		
	Waste pit			✓		
	Generator			✓		



Nawab Shah Alam Khan

COLLEGE OF ENGINEERING & TECHNOLOGY

Approved by AICTE | Permitted by Govt. of Telangana | Affiliated to JNTUH

EAMCET Code: NAWB | PGCET Code : NAWB1 | POLYCET Code : NAWB

FEEDBACK COLLECTION FORM ON FACILITIES

Student Regd Number: 17RT1K0543 Branch: CSE

Date: 26/3/19

	Mode	PARAMETER	Need	Good	Satisfactory	Excellent	
			Improvement				
Feedback Collection Form on facilities	LIBRARY	Are the required number of titles in your subject available in the library		/			
		Do you have the facility of Digital Library		/			
	INTERNET	Are you able to access internet center as and when required		/			
		Are you making use of educational online resources		/			
		Are there enough number of nodes available in the internet center		/			
		Are the net center staff co-Operative and helpful		/			
		Do you have free campus/departmental WI-FI		/			
		LAB	Availability of Equipment		/		
			Working condition of Equipment		/		
	Staff support in lab			/			
	Fire safety		/				
	CLASS ROOM	Size of class room	/		/		
		Lighting and ventilation			/		
		Projector			/		
		Smart class with smart board			/		
	SPORTS FACILITY	Availability of variety of Sports			/		
		Availability of Sports material (ball, bat etc)			/		
		Availability of Indoor Games			/		
		Conduction of tournaments			/		
	CANTEEN	Food price	/		/		
		Hygienic food			/		
		Clean place			/		
		Quantity			/		
		services			/		
	INFRASTRUCTURE	Water plant			/		
		Parking			/		
		Toilets			/		
		Green Campus pedestrian friendly			/		
	AMINITIES	CCTV Surveillance			/		
		Security guards			/		
Waste pit				/			
Generator				/			



Nawab Shah Alam Khan

COLLEGE OF ENGINEERING & TECHNOLOGY

Approved by AICTE | Permitted by Govt. of Telangana | Affiliated to JNTUH

EAMCET Code: NAWB | PGCET Code : NAWB1 | POLYCET Code : NAWB

FEEDBACK COLLECTION FORM ON FACILITIES

Student Regd Number: 17RT1A503 Branch: CSE

Date: 11/03/19

Mode	PARAMETER	Need Improvement	Good	Satisfactory	Excellent
Feedback Collection Form on facilities	LIBRARY	Are the required number of titles in your subject available in the library		✓	
		Do you have the facility of Digital Library	✓		
	INTERNET	Are you able to access internet center as and when required		✓	
		Are you making use of educational online resources		✓	
		Are there enough number of nodes available in the internet center	✓		
		Are the net center staff co-Operative and helpful		✓	
		Do you have free campus/departmental WI-FI	✓		
		LAB	Availability of Equipment		
	Working condition of Equipment		✓		
	Staff support in lab		✓	✓	
	Fire safety		✓		
	CLASS ROOM	Size of class room			✓
		Lighting and ventilation		✓	
		Projector		✓	
		Smart class with smart board	✓		
	SPORTS FACILITY	Availability of variety of Sports	✓		
		Availability of Sports material (ball, bat etc)	✓		
		Availability of Indoor Games		✓	
Conduction of tournaments			✓		
CANTEEN	Food price		✓		
	Hygienic food	✓			
	Clean place		✓		
	Quantity services		✓		
INFRASTRUCTURE	Water plant	✓			
	Parking		✓		
	Toilets		✓		
	Green Campus pedestrian friendly			✓	
AMINITIES	CCTV Surveillance	✓			
	Security guards	✓			
	Waste pit		✓		
	Generator		✓		



Nawab Shah Alam Khan

COLLEGE OF ENGINEERING & TECHNOLOGY

Approved by AICTE | Permitted by Govt. of Telangana | Affiliated to JNTUH

EAMCET Code: NAWB | PGECET Code : NAWB1 | POLYCET Code : NAWB

FEEDBACK COLLECTION FORM ON FACILITIES

Student Regd Number: 17RT1A0559 Branch: CSE

Date: 27/3/19

Mode	PARAMETER	Need Improvement	Good	Satisfactory	Excellent
LIBRARY	Are the required number of titles in your subject available in the library		/		
	Do you have the facility of Digital Library		/		
INTERNET	Are you able to access internet center as and when required		/		
	Are you making use of educational online resources		/		
	Are there enough number of nodes available in the internet center		/		
	Are the net center staff co-Operative and helpful		/		
	Do you have free campus/departmental WI-FI		/		
LAB	Availability of Equipment			/	
	Working condition of Equipment			/	
	Staff support in lab			/	
	Fire safety			/	
CLASS ROOM	Size of class room			/	
	Lighting and ventilation			/	
	Projector			/	
	Smart class with smart board			/	
SPORTS FACILITY	Availability of variety of Sports			/	
	Availability of Sports material (ball, bat etc)	/			/
	Availability of Indoor Games	/			
	Conduction of tournaments	/			
CANTEEN	Food price			/	
	Hygienic food			/	
	Clean place			/	
	Quantity			/	
	services			/	
INFRASTRUCTURE	Water plant			/	
	Parking			/	
	Toilets			/	
	Green Campus pedestrian friendly			/	
AMINITIES	CCTV Surveillance			/	
	Security guards			/	
	Waste pit		/		
	Generator		/		



Nawab Shah Alam Khan

COLLEGE OF ENGINEERING & TECHNOLOGY

Approved by AICTE | Permitted by Govt. of Telangana | Affiliated to JNTUH

EAMCET Code: NAWB | PGCET Code : NAWB1 | POLYMET Code : NAWB

FEEDBACK COLLECTION FORM ON FACILITIES

Student Regd Number: 16RT10517

Branch: CSE

Date: 24/07/18

	Mode	PARAMETER	Need Improvement	Good	Satisfactory	Excellent
Feedback Collection Form on facilities	LIBRARY	Are the required number of titles in your subject available in the library		✓		
		Do you have the facility of Digital Library			✓	
	INTERNET	Are you able to access internet center as and when required			✓	
		Are you making use of educational online resources			✓	
		Are there enough number of nodes available in the internet center			✓	
		Are the net center staff co-Operative and helpful			✓	
		Do you have free campus/departmental WI-FI			✓	
	LAB	Availability of Equipment		✓		
		Working condition of Equipment			✓	
		Staff support in lab		✓		✓
		Fire safety			✓	
	CLASS ROOM	Size of class room			✓	
		Lighting and ventilation		✓		✓
		Projector			✓	
		Smart class with smart board	✓		✓	
	SPORTS FACILITY	Availability of variety of Sports		✓	✓	
		Availability of Sports material (ball, bat etc)		✓		
		Availability of Indoor Games			✓	
		Conduction of tournaments				✓
	CANTEEN	Food price		✓	✓	
		Hygienic food		✓		
		Clean place			✓	
		Quantity services		✓	✓	
	INFRASTRUCTURE	Water plant		✓		
		Parking			✓	
		Toilets	✓			
		Green Campus pedestrian friendly				✓
	AMINITIES	CCTV Surveillance			✓	
		Security guards		✓		
		Waste pit			✓	
		Generator		✓		



Nawab Shah Alam Khan

COLLEGE OF ENGINEERING & TECHNOLOGY

Approved by AICTE | Permitted by Govt. of Telangana | Affiliated to JNTUH

EAMCET Code: NAWB | PGCET Code : NAWB1 | POLYCET Code : NAWB

FEEDBACK COLLECTION FORM ON FACILITIES

Student Regd Number: 17RT1A0545 Branch: CSE

Date: 19/3/19

Mode	PARAMETER	Need Improvement	Good	Satisfactory	Excellent	
LIBRARY	Are the required number of titles in your subject available in the library		✓			
	Do you have the facility of Digital Library		✓			
INTERNET	Are you able to access internet center as and when required		✓			
	Are you making use of educational online resources			✓		
	Are there enough number of nodes available in the internet center			✓		
	Are the net center staff co-Operative and helpful			✓		
	Do you have free campus/departmental WI-FI			✓		
	LAB	Availability of Equipment			✓	
		Working condition of Equipment			✓	
Staff support in lab				✓		
Fire safety		✓				
CLASS ROOM	Size of class room			✓		
	Lighting and ventilation			✓		
	Projector			✓		
	Smart class with smart board	✓				
SPORTS FACILITY	Availability of variety of Sports		✓			
	Availability of Sports material (ball, bat etc)		✓			
	Availability of Indoor Games		✓			
	Conduction of tournaments		✓			
CANTEEN	Food price	✓				
	Hygienic food		✓			
	Clean place			✓		
	Quantity			✓		
	services			✓		
INFRASTRUCTURE	Water plant			✓		
	Parking			✓		
	Toilets			✓		
	Green Campus pedestrian friendly			✓		
	AMINITIES	CCTV Surveillance			✓	
Security guards				✓		
Waste pit				✓		
Generator			✓			



Nawab Shah Alam Khan

COLLEGE OF ENGINEERING & TECHNOLOGY

Approved by AICTE | Permitted by Govt. of Telangana | Affiliated to JNTUH

EAMCET Code: NAWB | PGEET Code : NAWB1 | POLYCET Code : NAWB

FEEDBACK COLLECTION FORM ON FACILITIES

Student Regd Number: 16RT1A0511 Branch: CSE

Date: 17/10/18

Mode	PARAMETER	Need	Good	Satisfactory	Excellent
		Improvement			
LIBRARY	Are the required number of titles in your subject available in the library	✓		✓	
	Do you have the facility of Digital Library		✓		
INTERNET	Are you able to access internet center as and when required			✓	
	Are you making use of educational online resources		✓		
	Are there enough number of nodes available in the internet center			✓	
	Are the net center staff co-Operative and helpful			✓	
	Do you have free campus/departmental WI-FI			✓	
LAB	Availability of Equipment				✓
	Working condition of Equipment				✓
	Staff support in lab				✓
	Fire safety		✓		
CLASS ROOM	Size of class room			✓	
	Lighting and ventilation				✓
	Projector			✓	
	Smart class with smart board	✓			
SPORTS FACILITY	Availability of variety of Sports		✓		
	Availability of Sports material (ball, bat etc)		✓		
	Availability of Indoor Games			✓	
	Conduction of tournaments			✓	
CANTEEN	Food price			✓	
	Hygienic food		✓		
	Clean place			✓	
	Quantity services			✓	
					✓
INFRASTRUCTURE	Water plant		✓		
	Parking			✓	
	Toilets			✓	
	Green Campus pedestrian friendly			✓	
AMINITIES	CCTV Surveillance		✓		
	Security guards			✓	
	Waste pit		✓		
	Generator			✓	



Nawab Shah Alam Khan

COLLEGE OF ENGINEERING & TECHNOLOGY

Approved by AICTE | Permitted by Govt. of Telangana | Affiliated to JNTUH

EAMCET Code: NAWB | PGCET Code : NAWB1 | POLYCET Code : NAWB

FEEDBACK COLLECTION FORM ON FACILITIES

Student Regd Number: 18RTSA0501 Branch: CSE

Date: 9/7/18

Mode	PARAMETER	Need Improvement	Good	Satisfactory	Excellent	
LIBRARY	Are the required number of titles in your subject available in the library		✓			
	Do you have the facility of Digital Library		✓			
INTERNET	Are you able to access internet center as and when required		✓			
	Are you making use of educational online resources		✓			
	Are there enough number of nodes available in the internet center		✓			
	Are the net center staff co-Operative and helpful		✓			
	Do you have free campus/departmental WI-FI		✓			
	LAB	Availability of Equipment			✓	
		Working condition of Equipment			✓	
Staff support in lab				✓		
Fire safety				✓		
CLASS ROOM	Size of class room			✓		
	Lighting and ventilation			✓		
	Projector			✓		
	Smart class with smart board	✓				
SPORTS FACILITY	Availability of variety of Sports			✓		
	Availability of Sports material (ball, bat etc)			✓		
	Availability of Indoor Games			✓		
	Conduction of tournaments			✓		
CANTEEN	Food price		✓			
	Hygienic food			✓		
	Clean place			✓		
	Quantity			✓		
	services			✓		
INFRASTRUCTURE	Water plant			✓		
	Parking			✓		
	Toilets			✓		
	Green Campus pedestrian friendly				✓	
	AMINITIES	CCTV Surveillance			✓	
Security guards				✓	✓	
Waste pit				✓		
Generator				✓		



Nawab Shah Alam Khan

COLLEGE OF ENGINEERING & TECHNOLOGY

Approved by AICTE | Permitted by Govt. of Telangana | Affiliated to JNTUH

EAMCET Code: NAWB | PGECET Code : NAWB1 | POLYCET Code : NAWB

FEEDBACK COLLECTION FORM ON FACILITIES

Student Regd Number: 16RT1A0501 Branch: CSE

Date: 23/12/18

Mode	PARAMETER	Need Improvement	Good	Satisfactory	Excellent
LIBRARY	Are the required number of titles in your subject available in the library	✓		✓	
	Do you have the facility of Digital Library			✓	
INTERNET	Are you able to access internet center as and when required		✓		
	Are you making use of educational online resources			✓	
	Are there enough number of nodes available in the internet center		✓		
	Are the net center staff co-Operative and helpful			✓	
	Do you have free campus/departmental WI-FI			✓	
LAB	Availability of Equipment		✓		
	Working condition of Equipment		✓		
	Staff support in lab			✓	
	Fire safety			✓	
CLASS ROOM	Size of class room				✓
	Lighting and ventilation				✓
	Projector			✓	
SPORTS FACILITY	Smart class with smart board	✓			
	Availability of variety of Sports		✓		
	Availability of Sports material (ball, bat etc)			✓	
	Availability of Indoor Games		✓		
CANTEEN	Conduction of tournaments			✓	
	Food price		✓		
	Hygienic food			✓	
	Clean place			✓	
INFRASTRUCTURE	Quantity services		✓		
	Water plant			✓	
	Parking			✓	
	Toilets		✓		
AMINITIES	Green Campus pedestrian friendly			✓	
	CCTV Surveillance			✓	
	Security guards			✓	
	Waste pit			✓	
	Generator		✓		



Nawab Shah Alam Khan

COLLEGE OF ENGINEERING & TECHNOLOGY

Approved by AICTE | Permitted by Govt. of Telangana | Affiliated to JNTUH

EAMCET Code: NAWB | PGCET Code : NAWB1 | POLYCET Code : NAWB

FEEDBACK COLLECTION FORM ON FACILITIES

Student Regd Number: 16RT1A054

Branch: CSE

Date: 28/12/18

Mode	PARAMETER	Need Improvement	Good	Satisfactory	Excellent
LIBRARY	Are the required number of titles in your subject available in the library		✓		
	Do you have the facility of Digital Library		✓		
INTERNET	Are you able to access internet center as and when required			✓	
	Are you making use of educational online resources		✓		
	Are there enough number of nodes available in the internet center			✓	
	Are the net center staff co-Operative and helpful			✓	
	Do you have free campus/departmental WI-FI			✓	
				✓	
LAB	Availability of Equipment			✓	
	Working condition of Equipment			✓	
	Staff support in lab			✓	
	Fire safety	✓			
CLASS ROOM	Size of class room			✓	
	Lighting and ventilation			✓	
	Projector			✓	
	Smart class with smart board	✓			
SPORTS FACILITY	Availability of variety of Sports			✓	
	Availability of Sports material (ball, bat etc)		✓		
	Availability of Indoor Games		✓		
	Conduction of tournaments		✓		
CANTEEN	Food price			✓	
	Hygienic food			✓	
	Clean place			✓	
	Quantity			✓	
	services			✓	
INFRASTRUCTURE	Water plant			✓	
	Parking			✓	
	Toilets		✓		
	Green Campus pedestrian friendly				✓
AMINITIES	CCTV Surveillance			✓	
	Security guards			✓	
	Waste pit		✓		
	Generator		✓		



Nawab Shah Alam Khan

COLLEGE OF ENGINEERING & TECHNOLOGY

Approved by AICTE | Permitted by Govt. of Telangana | Affiliated to JNTUH

EAMCET Code: NAWB | PGCET Code : NAWB1 | POLYCET Code : NAWB

FEEDBACK COLLECTION FORM ON FACILITIES

Student Regd Number: 15R71A039 Branch: C8C

Date: 10/12/18

Mode	PARAMETER	Need Improvement	Good	Satisfactory	Excellent
LIBRARY	Are the required number of titles in your subject available in the library	✓		✓	
	Do you have the facility of Digital Library		✓		
INTERNET	Are you able to access internet center as and when required			✓	
	Are you making use of educational online resources			✓	
	Are there enough number of nodes available in the internet center			✓	
	Are the net center staff co-Operative and helpful		✓		
	Do you have free campus/departmental WI-FI			✓	
	Availability of Equipment		✓		
LAB	Working condition of Equipment			✓	
	Staff support in lab		✓		
	Fire safety			✓	
	Size of class room			✓	
CLASS ROOM	Lighting and ventilation		✓		
	Projector			✓	
	Smart class with smart board	✓			
	Availability of variety of Sports			✓	
SPORTS FACILITY	Availability of Sports material (ball, bat etc)			✓	
	Availability of Indoor Games			✓	
	Conduction of tournaments		✓		
	Food price			✓	
CANTEEN	Hygienic food			✓	
	Clean place			✓	
	Quantity			✓	
	services			✓	
INFRASTRUCTURE	Water plant			✓	
	Parking			✓	
	Toilets			✓	
	Green Campus pedestrian friendly			✓	
AMINITIES	CCTV Surveillance			✓	
	Security guards		✓		
	Waste pit		✓		
	Generator				✓



Nawab Shah Alam Khan

COLLEGE OF ENGINEERING & TECHNOLOGY

Approved by AICTE | Permitted by Govt. of Telangana | Affiliated to JNTUH

EAMCET Code: NAWB | PGCET Code : NAWB1 | POLYCET Code : NAWB

FEEDBACK COLLECTION FORM ON FACILITIES

Student Regd Number: 16RTA0552

Branch: CSE

Date: 24/12/18

Feedback Collection Form on facilities	Mode	PARAMETER	Need Improvement	Good	Satisfactory	Excellent
	LIBRARY	Are the required number of titles in your subject available in the library		/		
		Do you have the facility of Digital Library		/		
	INTERNET	Are you able to access internet center as and when required		/		
		Are you making use of educational online resources		/		
		Are there enough number of nodes available in the internet center		/		
		Are the net center staff co-Operative and helpful			/	
		Do you have free campus/departmental WI-FI			/	
		Availability of Equipment			/	
	LAB	Working condition of Equipment			/	
		Staff support in lab			/	
		Fire safety	/		/	
		Size of class room	/		/	
	CLASS ROOM	Lighting and ventilation			/	/
		Projector			/	
		Smart class with smart board		/	/	
		Availability of variety of Sports		/		
	SPORTS FACILITY	Availability of Sports material (ball, bat etc)		/		
		Availability of Indoor Games		/		
		Conduction of tournaments			/	
		Food price			/	
	CANTEEN	Hygienic food			/	
		Clean place			/	
		Quantity			/	
		services			/	
	INFRASTRUCTURE	Water plant			/	
		Parking		/	/	
		Toilets		/	/	
		Green Campus pedestrian friendly			/	
	AMINITIES	CCTV Surveillance			/	
		Security guards			/	
		Waste pit			/	
		Generator			/	



Nawab Shah Alam Khan

COLLEGE OF ENGINEERING & TECHNOLOGY

Approved by AICTE | Permitted by Govt. of Telangana | Affiliated to JNTUH

EAMCET Code: NAWB | PGCET Code : NAWB1 | POLYCET Code : NAWB

FEEDBACK COLLECTION FORM ON FACILITIES

Student Regd Number: 15RT1A0514

Branch: CSE

Date: 23/10/2018

Feedback Collection Form on facilities	Mode	PARAMETER	Need Improvement	Good	Satisfactory	Excellent
	LIBRARY	Are the required number of titles in your subject available in the library	✓		✓	
		Do you have the facility of Digital Library		✓		
	INTERNET	Are you able to access internet center as and when required			✓	
		Are you making use of educational online resources			✓	✓
		Are there enough number of nodes available in the internet center				✓
		Are the net center staff co-Operative and helpful			✓	
		Do you have free campus/departmental WI-FI	✓			
	LAB	Availability of Equipment				
		Working condition of Equipment	✓			
		Staff support in lab			✓	
		Fire safety	✓			
	CLASS ROOM	Size of class room			✓	
		Lighting and ventilation			✓	
		Projector	✓	✓		
		Smart class with smart board	✓			
	SPORTS FACILITY	Availability of variety of Sports			✓	
		Availability of Sports material (ball, bat etc)		✓	✓	
		Availability of Indoor Games			✓	
		Conduction of tournaments			✓	
	CANTEEN	Food price				✓
		Hygienic food			✓	✓
		Clean place			✓	✓
		Quantity services			✓	
	INFRASTRUCTURE	Water plant		✓	✓	
		Parking				✓
		Toilets			✓	
		Green Campus pedestrian friendly				✓
	AMINITIES	CCTV Surveillance		✓	✓	✓
		Security guards			✓	
		Waste pit		✓		
		Generator			✓	



Nawab Shah Alam Khan

COLLEGE OF ENGINEERING & TECHNOLOGY

Approved by AICTE | Permitted by Govt. of Telangana | Affiliated to JNTUH

EAMCET Code: NAWB | PGCET Code : NAWB1 | POLYCET Code : NAWB

FEEDBACK COLLECTION FORM ON FACILITIES

Student Regd Number: 16RTA0559

Branch: CSE

Date: 17/12/18

Mode	PARAMETER	Need Improvement	Good	Satisfactory	Excellent	
LIBRARY	Are the required number of titles in your subject available in the library		/			
	Do you have the facility of Digital Library		/			
INTERNET	Are you able to access internet center as and when required		/			
	Are you making use of educational online resources		/			
	Are there enough number of nodes available in the internet center		/			
	Are the net center staff co-Operative and helpful		/			
	Do you have free campus/departmental WI-FI		/			
	LAB	Availability of Equipment			/	
		Working condition of Equipment			/	
Staff support in lab				/		
Fire safety				/		
CLASS ROOM	Size of class room			/		
	Lighting and ventilation			/		
	Projector			/		
	Smart class with smart board	/		/		
SPORTS FACILITY	Availability of variety of Sports			/		
	Availability of Sports material (ball, bat etc)		/			
	Availability of Indoor Games		/			
	Conduction of tournaments			/		
CANTEEN	Food price			/		
	Hygienic food			/		
	Clean place			/		
	Quantity			/		
	services			/		
INFRASTRUCTURE	Water plant			/		
	Parking		/			
	Toilets		/			
	Green Campus pedestrian friendly				/	
	AMINITIES	CCTV Surveillance			/	
Security guards				/		
Waste pit				/		
Generator			/			



Nawab Shah Alam Khan

COLLEGE OF ENGINEERING & TECHNOLOGY

Approved by AICTE | Permitted by Govt. of Telangana | Affiliated to JNTUH

EAMCET Code: NAWB | PGECET Code : NAWB1 | POLYCET Code : NAWB

FEEDBACK COLLECTION FORM ON FACILITIES

Student Regd Number: 14RTIA511

Branch: CSE

Date: 17/8/18

	Mode	PARAMETER	Need Improvement	Good	Satisfactory	Excellent
Feedback Collection Form on facilities	LIBRARY	Are the required number of titles in your subject available in the library	✓			
		Do you have the facility of Digital Library		✓		
	INTERNET	Are you able to access internet center as and when required			✓	
		Are you making use of educational online resources			✓	
		Are there enough number of nodes available in the internet center			✓	
		Are the net center staff co-Operative and helpful		✓		
		Do you have free campus/departmental WI-FI			✓	
	LAB	Availability of Equipment		✓		
		Working condition of Equipment			✓	
		Staff support in lab			✓	
		Fire safety		✓		
	CLASS ROOM	Size of class room			✓	
		Lighting and ventilation				✓
		Projector			✓	
		Smart class with smart board	✓			
	SPORTS FACILITY	Availability of variety of Sports			✓	
		Availability of Sports material (ball, bat etc)		✓		
		Availability of Indoor Games		✓	✓	
		Conduction of tournaments		✓		
	CANTEEN	Food price		✓	✓	
		Hygienic food		✓		
		Clean place		✓	✓	
		Quantity services		✓		✓
	INFRASTRUCTURE	Water plant			✓	
		Parking				✓
		Toilets		✓		
		Green Campus pedestrian friendly				✓
	AMINITIES	CCTV Surveillance		✓	✓	
		Security guards		✓		
		Waste pit		✓		
		Generator		✓		



Nawab Shah Alam Khan

COLLEGE OF ENGINEERING & TECHNOLOGY

Approved by AICTE | Permitted by Govt. of Telangana | Affiliated to JNTUH

EAMCET Code: NAWB | PGCET Code : NAWB1 | POLYCET Code : NAWB

FEEDBACK COLLECTION FORM ON FACILITIES

Student Regd Number: 15RT/A0593 Branch: CSE

Date: 8/10/18

Mode	PARAMETER	Need Improvement	Good	Satisfactory	Excellent
Feedback Collection Form on facilities	LIBRARY	Are the required number of titles in your subject available in the library			
		Do you have the facility of Digital Library			
	INTERNET	Are you able to access internet center as and when required			
		Are you making use of educational online resources			
		Are there enough number of nodes available in the internet center			
		Are the net center staff co-Operative and helpful			
		Do you have free campus/departmental WI-FI			
		Availability of Equipment			
	LAB	Working condition of Equipment			
		Staff support in lab			
		Fire safety			
		Smart class with smart board			
	CLASS ROOM	Size of class room			
		Lighting and ventilation			
		Projector			
		Smart class with smart board			
	SPORTS FACILITY	Availability of variety of Sports			
		Availability of Sports material (ball, bat etc)			
		Availability of Indoor Games			
		Conduction of tournaments			
CANTEEN	Food price				
	Hygienic food				
	Clean place				
	Quantity				
	services				
INFRASTRUCTURE	Water plant				
	Parking				
	Toilets				
	Green Campus pedestrian friendly				
AMINITIES	CCTV Surveillance				
	Security guards				
	Waste pit				
	Generator				



Nawab Shah Alam Khan

COLLEGE OF ENGINEERING & TECHNOLOGY

Approved by AICTE | Permitted by Govt. of Telangana | Affiliated to JNTUH

EAMCET Code: NAWB | PGCET Code : NAWB1 | POLYCET Code : NAWB

FEEDBACK COLLECTION FORM ON FACILITIES

Student Regd Number: NR T / A0551 Branch: CSE

Date: 8/10/18

Mode	PARAMETER	Need Improvement	Good	Satisfactory	Excellent
LIBRARY	Are the required number of titles in your subject available in the library		✓		
	Do you have the facility of Digital Library		✓		
INTERNET	Are you able to access internet center as and when required		✓		
	Are you making use of educational online resources			✓	
	Are there enough number of nodes available in the internet center			✓	
	Are the net center staff co-Operative and helpful			✓	
	Do you have free campus/departmental WI-FI			✓	
	Availability of Equipment			✓	
	Working condition of Equipment			✓	
LAB	Staff support in lab			✓	
	Fire safety	✓			
	Size of class room			✓	
	Lighting and ventilation			✓	
CLASS ROOM	Projector			✓	
	Smart class with smart board	✓			
	Availability of variety of Sports			✓	
	Availability of Sports material (ball, bat etc)			✓	
SPORTS FACILITY	Availability of Indoor Games			✓	
	Conduction of tournaments			✓	
	Food price			✓	
	Hygienic food			✓	
CANTEEN	Clean place			✓	
	Quantity services			✓	
	Water plant			✓	
	Parking			✓	
INFRASTRUCTURE	Toilets			✓	
	Green Campus pedestrian friendly				✓
	CCTV Surveillance			✓	
	Security guards			✓	
AMINITIES	Waste pit			✓	
	Generator		✓		



Nawab Shah Alam Khan

COLLEGE OF ENGINEERING & TECHNOLOGY

Approved by AICTE | Permitted by Govt. of Telangana | Affiliated to JNTUH

EAMCET Code: NAWB | PGECET Code : NAWB1 | POLYCET Code : NAWB

FEEDBACK COLLECTION FORM ON FACILITIES

Student Regd Number: 18RT1A0523 Branch: CEE

Date: 12-02-19

Mode	PARAMETER	Need Improvement	Good	Satisfactory	Excellent
LIBRARY	Are the required number of titles in your subject available in the library	✓	✓		
	Do you have the facility of Digital Library		✓		
INTERNET	Are you able to access internet center as and when required			✓	
	Are you making use of educational online resources			✓	
	Are there enough number of nodes available in the internet center			✓	
	Are the net center staff co-Operative and helpful		✓		
	Do you have free campus/departmental WI-FI			✓	
	Availability of Equipment		✓		
LAB	Working condition of Equipment			✓	
	Staff support in lab			✓	
	Fire safety		✓		
	Size of class room				✓
CLASS ROOM	Lighting and ventilation			✓	
	Projector			✓	
	Smart class with smart board	✓			
	Availability of variety of Sports			✓	
SPORTS FACILITY	Availability of Sports material (ball, bat etc)			✓	
	Availability of Indoor Games			✓	
	Conduction of tournaments		✓		
	Food price			✓	
CANTEEN	Hygienic food			✓	
	Clean place		✓		
	Quantity services			✓	
	Water plant		✓		
INFRASTRUCTURE	Parking				✓
	Toilets	✓			✓
	Green Campus pedestrian friendly				✓
	CCTV Surveillance			✓	
AMINITIES	Security guards		✓		
	Waste pit			✓	
	Generator		✓		



Nawab Shah Alam Khan

COLLEGE OF ENGINEERING & TECHNOLOGY

Approved by AICTE | Permitted by Govt. of Telangana | Affiliated to JNTUH

EAMCET Code: NAWB | PGCET Code : NAWB1 | POLYCET Code : NAWB

FEEDBACK COLLECTION FORM ON FACILITIES

Student Regd Number: 15RT1A0508 Branch: CSE

Date: 10-08-18.

Mode	PARAMETER	Need Improvement	Good	Satisfactory	Excellent
LIBRARY	Are the required number of titles in your subject available in the library	✓			
	Do you have the facility of Digital Library		✓		
INTERNET	Are you able to access internet center as and when required			✓	
	Are you making use of educational online resources			✓	
	Are there enough number of nodes available in the internet center			✓	
	Are the net center staff co-Operative and helpful		✓		
	Do you have free campus/departmental WI-FI			✓	
				✓	
LAB	Availability of Equipment			✓	
	Working condition of Equipment			✓	
	Staff support in lab				✓
	Fire safety		✓		
CLASS ROOM	Size of class room			✓	
	Lighting and ventilation			✓	
	Projector			✓	
	Smart class with smart board	✓			
SPORTS FACILITY	Availability of variety of Sports			✓	
	Availability of Sports material (ball, bat etc)			✓	
	Availability of Indoor Games			✓	
	Conduction of tournaments			✓	
CANTEEN	Food price			✓	
	Hygienic food			✓	
	Clean place			✓	
	Quantity services			✓	
INFRASTRUCTURE	Water plant			✓	
	Parking			✓	
	Toilets		✓		
	Green Campus pedestrian friendly			✓	
AMINITIES	CCTV Surveillance		✓		
	Security guards		✓		
	Waste pit		✓		
	Generator			✓	

NAWAB SHAH ALAM KHAN COLLEGE OF ENGINEERING & TECHNOLOGY

Malakpet, Hyderabad

Department of Computer Science Engineering Analysis of Feedback on Facilities 2018-19


Metric score Analysis	Need Improvement	Good	Satisfactory	Excellent
Positive Feedback percentage	<35%	35%-54%	55%-74%	75%-100%
Score	0	1	2	3

Mode	PARAMETER	Total number of Responses [26]		
		Negative Response	Positive Response	Metric
LIBRARY	Are the required number of titles in your subject available in the library	16	10	1
	Do you have the facility of Digital Library	4	22	3
INTERNET	Are you able to access internet center as and when required	10	16	2
	Are you making use of educational online resources	6	20	3
	Are there enough number of nodes available in the internet center	8	18	2
	Are the net center staff co-Operative and helpful	3	23	3
	Do you have free campus/departmental WI-FI	3	23	3
LAB	Availability of Equipment	5	21	3
	Working condition of Equipment	4	22	3
	Staff support in lab	4	22	3
	Fire safety	5	21	3
CLASS ROOMS	Size of class room	6	20	3
	Lighting and ventilation	3	23	3
	Projector	6	20	3
	Smart class with smart board	16	10	1
SPORTS	Availability of variety of Sports	4	22	3
	Availability of Sports material (ball, bat etc)	10	16	2
	Availability of Indoor Games	5	21	3
	Conduction of tournaments	8	18	2



CANTEEN	Food price	9	17	2
	Hygienic food	4	22	3
	Clean place	5	21	3
	Quantity	6	20	3
	Services	5	21	3
INFRASTRUCTURE	Water plant	10	16	2
	Parking	1	25	3
	Toilets	11	15	3
	Green Campus pedestrian friendly	2	24	3
AMINITIES	CCTV Surveillance	4	22	3
	Security guards	5	21	3
	Waste pit	10	16	2
	Generator	9	17	2


Co-ordinator


HOD



Nawab Shah Alam Khan

COLLEGE OF ENGINEERING & TECHNOLOGY

Approved by AICTE | Permitted by Govt. of Telangana | Affiliated to JNTUH

EAMCET Code: NAWB | PGCET Code : NAWB1 | POLYCET Code : NAWB

Date: 03/04/2019

To:
The Principal,
NSAKCET,
Malakpet,
Hyderabad.

Sub: Improvement needs to be done on Facilities – Action Rgd.

Respected Sir,

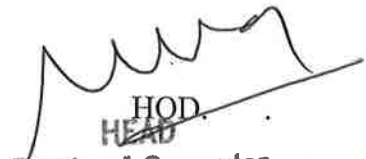
According to the survey done on the Student feedback in the Academic year 2018-2019 on the facilities provided by the college for the department of Computer Science Engineering, we have come to a conclusion regarding some of the facilities that needs improvement.

1. System availability in the computer center is not enough.
2. Need to Increase the books in the library.
3. Smart boards are not available in Classrooms.
4. Cannot access to internet whenever it is required.

This is for your kind information and necessary action.

Thanking you,

Yours Sincerely,


HOD.
HEAD
Dept. of Computer
Science & Engineering
NAWAB SHAH ALAM KHAN COLLEGE
OF ENGINEERING & TECHNOLOGY
16-4-1/A, New Malakpet, Hyderabad-500024.



Nawab Shah Alam Khan

COLLEGE OF ENGINEERING & TECHNOLOGY

Approved by AICTE | Permitted by Govt. of Telangana | Affiliated to JNTUH

EAMCET Code: NAWB | PGCET Code : NAWB1 | POLYGET Code : NAWB

Date: 15/04/2019

To:
The Joint Secretary,
NSAKCET,
Malakpet,
Hyderabad.

Sub: Improvement for the common facilities on campus – Req-Rgd.

Respected Sir,

As per our college policy of an annual maintenance works, I am here with submitting the details of the repairs/maintenance needed on a priority basis, based on the Feedback received from the respective departments as per the following.

1. Cleanliness and maintenance of the toilets on regular basis required.
2. Need to Increase the books in the library.
3. Smart boards are not available in Classrooms.
4. System availability in the computer center is not enough.
5. More Sports tournaments to be conducted.
6. Need to increase Dust bins in campus.

I request you to kindly consider the same under the upcoming maintenance activities.

Thanking you,

PRINCIPAL



Nawab Shah Alam Khan

COLLEGE OF ENGINEERING & TECHNOLOGY

Approved by AICTE | Permitted by Govt. of Telangana | Affiliated to JNTUH

EAMCET Code: NAWB | PGCET Code : NAWB1 | POLYCET Code : NAWB

CORRECTIVE MEASURES 2018-19

Based on the Feedback analysis on facilities taken from all the departments and submitted to the management the following measures/action taken by the management to improve the facilities are as follows:

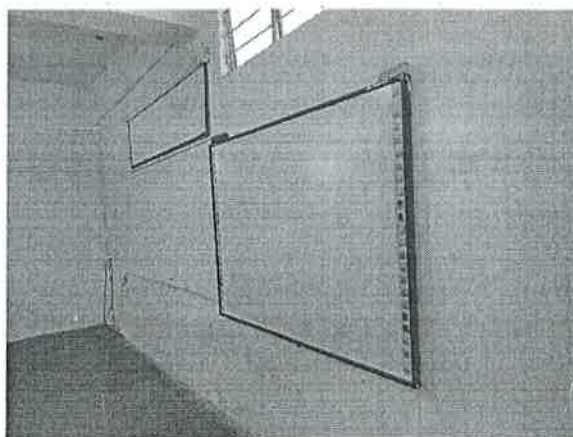
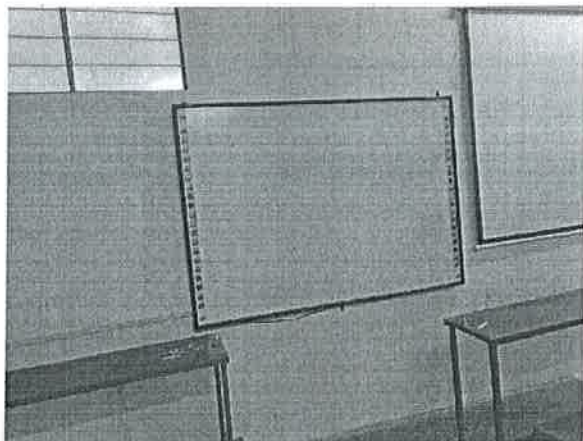
1. Library:

Books for all the respective department is increased in the library according to syllabus of their respective year.



2. Smart boards:

The Smart boards have been installed in the classrooms.

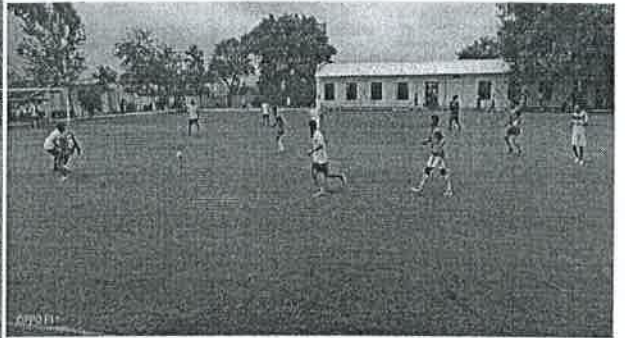
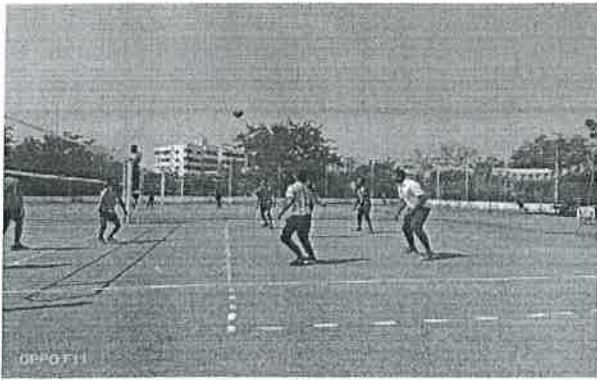


3. Tournament:

The Inter-college tournaments like volleyball, cricket, football, chess etc., have been conducted.







ASB



نواب شاہ عالم خان انجینئرنگ کالج کو 5 گولڈ میڈل

جس دن 19 - 20 ستمبر (19 ستمبر) نواب شاہ عالم خان انجینئرنگ کالج میں ہونے والے قومی سطح پر منعقد ہونے والے NSACET Drafting Competition میں کالج کی ٹیم نے 5 گولڈ میڈل جیت کر اعزاز حاصل کیا۔

نواب شاہ عالم خان انجینئرنگ کالج کی ٹیم نے NSACET Drafting Competition میں 5 گولڈ میڈل جیت کر اعزاز حاصل کیا۔



نواب شاہ عالم خان انجینئرنگ کالج کے طلبہ نے قومی سطح پر تیسرا مقام حاصل کیا

نواب شاہ عالم خان انجینئرنگ کالج کے طلبہ نے قومی سطح پر تیسرا مقام حاصل کیا۔

(B.Tech Civil 2nd Year)

(Diploma 2nd Year)

نواب شاہ عالم خان انجینئرنگ کالج کے طلبہ نے قومی سطح پر تیسرا مقام حاصل کیا۔

4. Computer Center:

The number of systems in the CSE computer center has been increased/repaired.



(Handwritten signature)

5. Dustbin:

Dustbins have been arranged in the corners of each floor of the campus.



PRINCIPAL